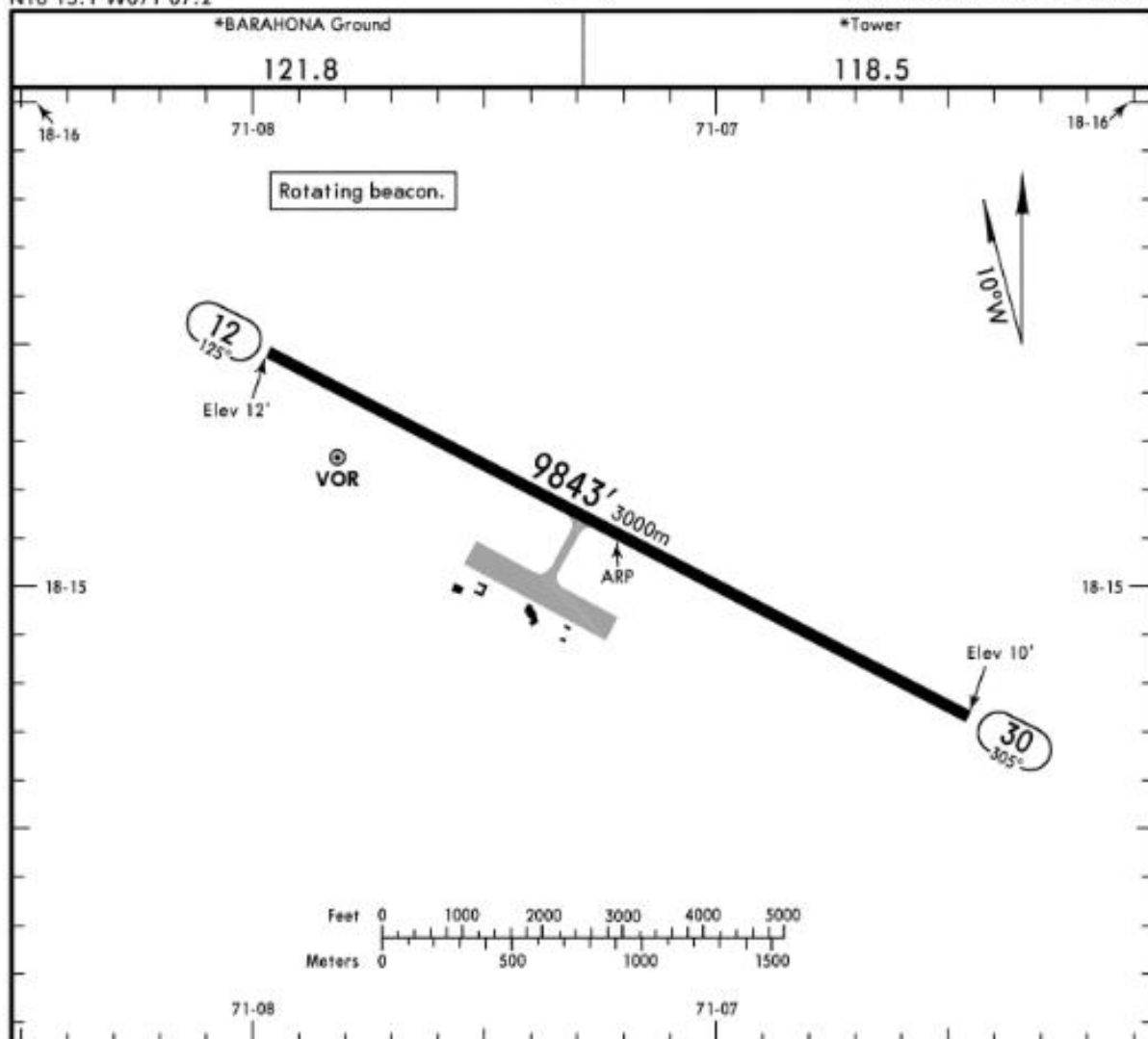


**MDBH/BRX**  
 Apt Elev 12'  
 N18 15.1 W071 07.2

**JEPPESEN**  
 22 SEP 17 (10-9)

**BARAHONA, DOM REP**  
 MARIA MONTEZ INTL



**ADDITIONAL RUNWAY INFORMATION**

RWY	USABLE LENGTHS	LANDING BEYOND	TAKE-OFF	WIDTH
12 30	HIRL REIL PAPI (angle 3.0°)			148' 45m

**TAKE-OFF**

All Rws

1 & 2 Eng	Available Landing Mimimums
3 & 4 Eng	

CHANGES: New chart.

© JEPPESEN, 2017. ALL RIGHTS RESERVED.

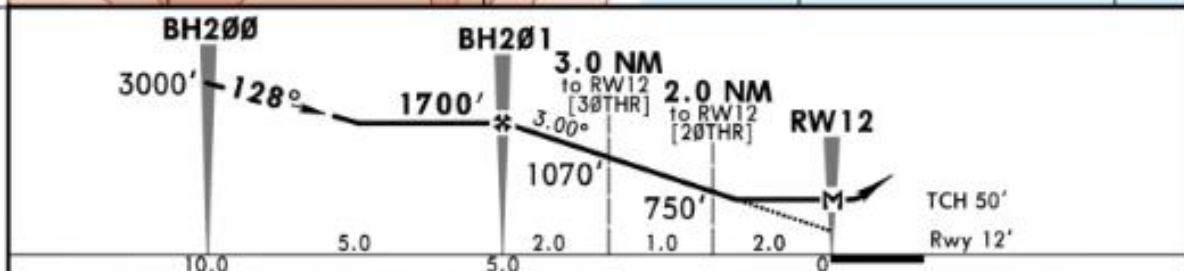
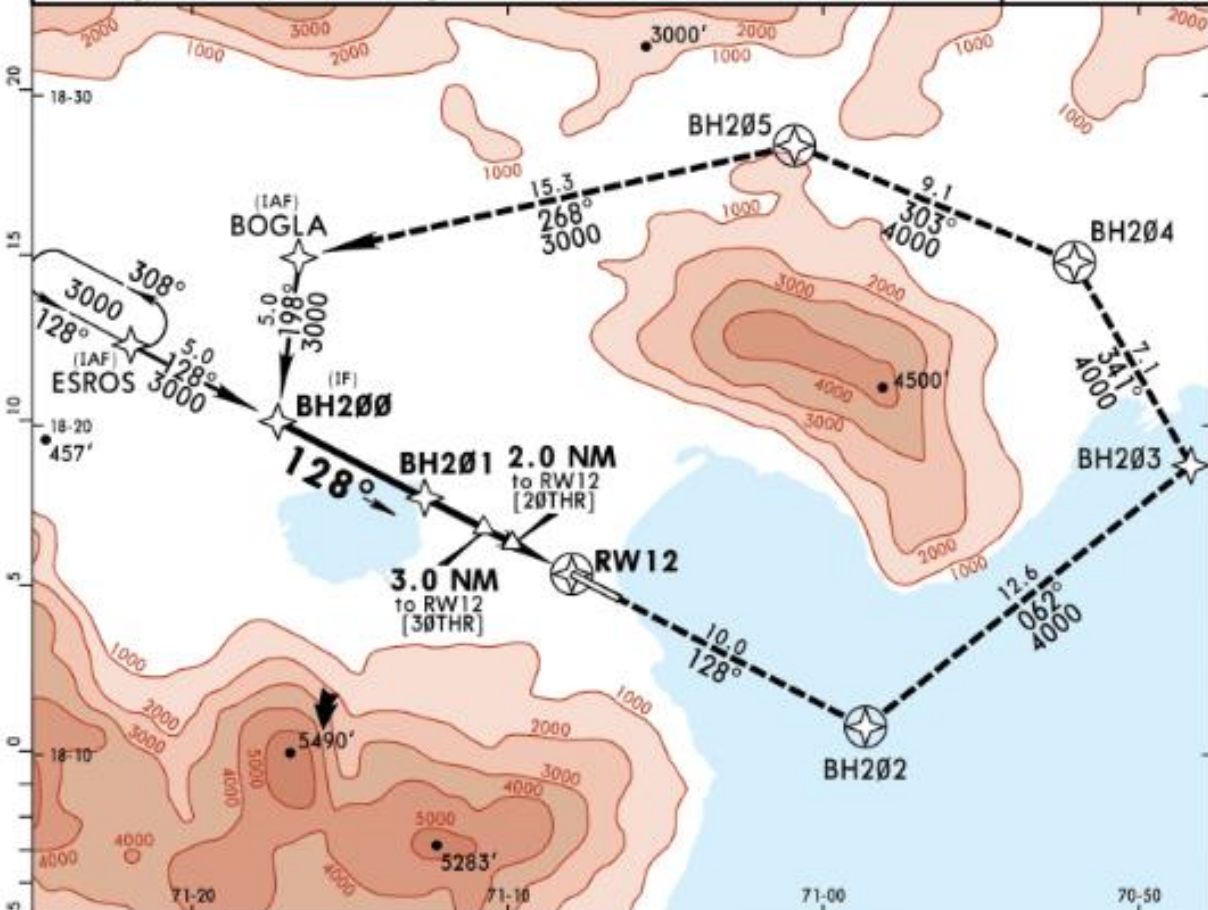
**NAVIGRAPH CHARTS INTENDED FOR FLIGHT SIMULATION ONLY - NOT FOR NAVIGATIONAL USE**

MDBH/BRX  
MARIA MONTEZ INTL

JEPPESSEN  
22 SEP 17 (12-1)

BARAHONA, DOM REP  
RNAV (GNSS) Rwy 12

*BARAHONA Approach 119.5		*BARAHONA Tower 118.5			*Ground 121.8
RNAV	Final Apch Crs 128°	Minimum Alt BH201 1700' (1688')	MDA(H) 386' (374')	Apt Elev 12' Rwy 12'	
<b>MISSED APCH:</b> Climb to 3000' on track 128° to BH202, LEFT turn direct to BH203 climbing to 4000'; LEFT turn via BH204 and BH205 to BOGLA with 3000' to start the approach or in accordance with ATC instructions.					
All Set: hPa		Rwy Elev: 0 hPa	Trans level: FL 180	Trans alt: 17000'	MSA ARP



Gnd speed-Kts	70	90	100	120	140	160	REIL PAPI	3000' on 128°	BH202
Descent Angle	3.00°	372	478	531	637	743			
MAP at RW12									

STRAIGHT-IN LANDING RWY 12  
MDA(H) 386' (374')

A	
B	1.6 km
C	
D	2.0 km

CHANGES: New procedure. © JEPPESSEN, 2017. ALL RIGHTS RESERVED.

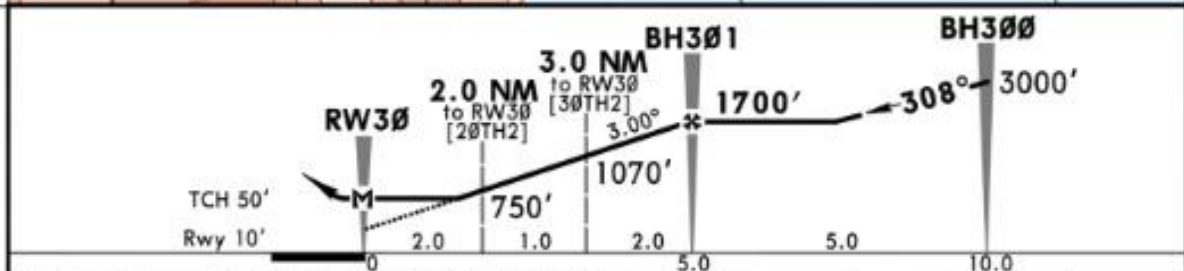
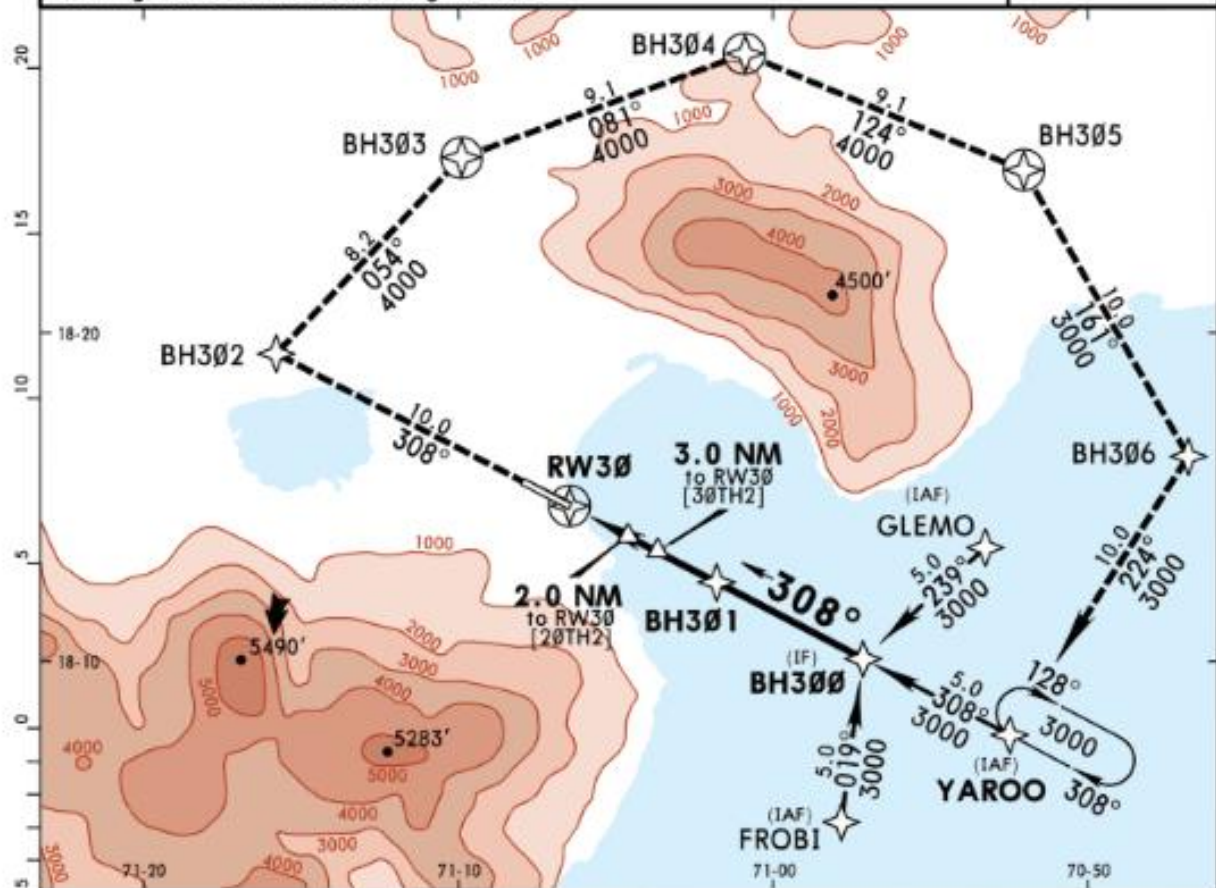
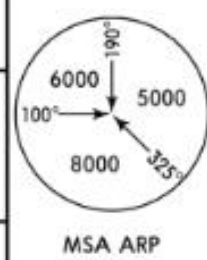
NAVIGRAPH CHARTS INTENDED FOR FLIGHT SIMULATION ONLY - NOT FOR NAVIGATIONAL USE

MDBH/BRX  
MARIA MONTEZ INTL

JEPESEN  
22 SEP 17 (12-2)

BARAHONA, DOM REP  
RNAV (GNSS) Rwy 30

*BARAHONA Approach 119.5		*BARAHONA Tower 118.5		*Ground 121.8	
RNAV	Final Apch Crs <b>308°</b>	Minimum Alt <b>BH301</b> 1700' (1690')	MDA(H) <b>487'</b> (477')	Apt Elev 12' Rwy 10'	
<b>MISSED APCH:</b> Climb to 3000' on track 308° to BH302, RIGHT turn direct to BH303 climbing to 4000'; turn RIGHT via BH304 and BH305 at 4000', RIGHT turn, direct to BH306 descending to 3000' turning RIGHT to YAROO and hold or in accordance with ATC instructions.					
Alt Set: hPa		Rwy Elev: 0 hPa	Trans level: FL 180	Trans alt: 17000'	
I. Timing not authorized for defining the MAP.					



Gnd speed-Kts	70	90	100	120	140	160	REIL PAP1	3000' ↑ 308°	BH302	
Descent Angle	3.00°	372	478	531	637	743				849
MAP at RW30										

STRAIGHT-IN LANDING RWY 30  
MDA(H) **487'** (477')

PANS OPS	A	1.6 km
	B	2.0 km
	C	2.4 km
	D	

CHANGES: New procedure. © JEPESEN, 2017. ALL RIGHTS RESERVED.

NAVIGRAPH CHARTS INTENDED FOR FLIGHT SIMULATION ONLY - NOT FOR NAVIGATIONAL USE