

MDJB

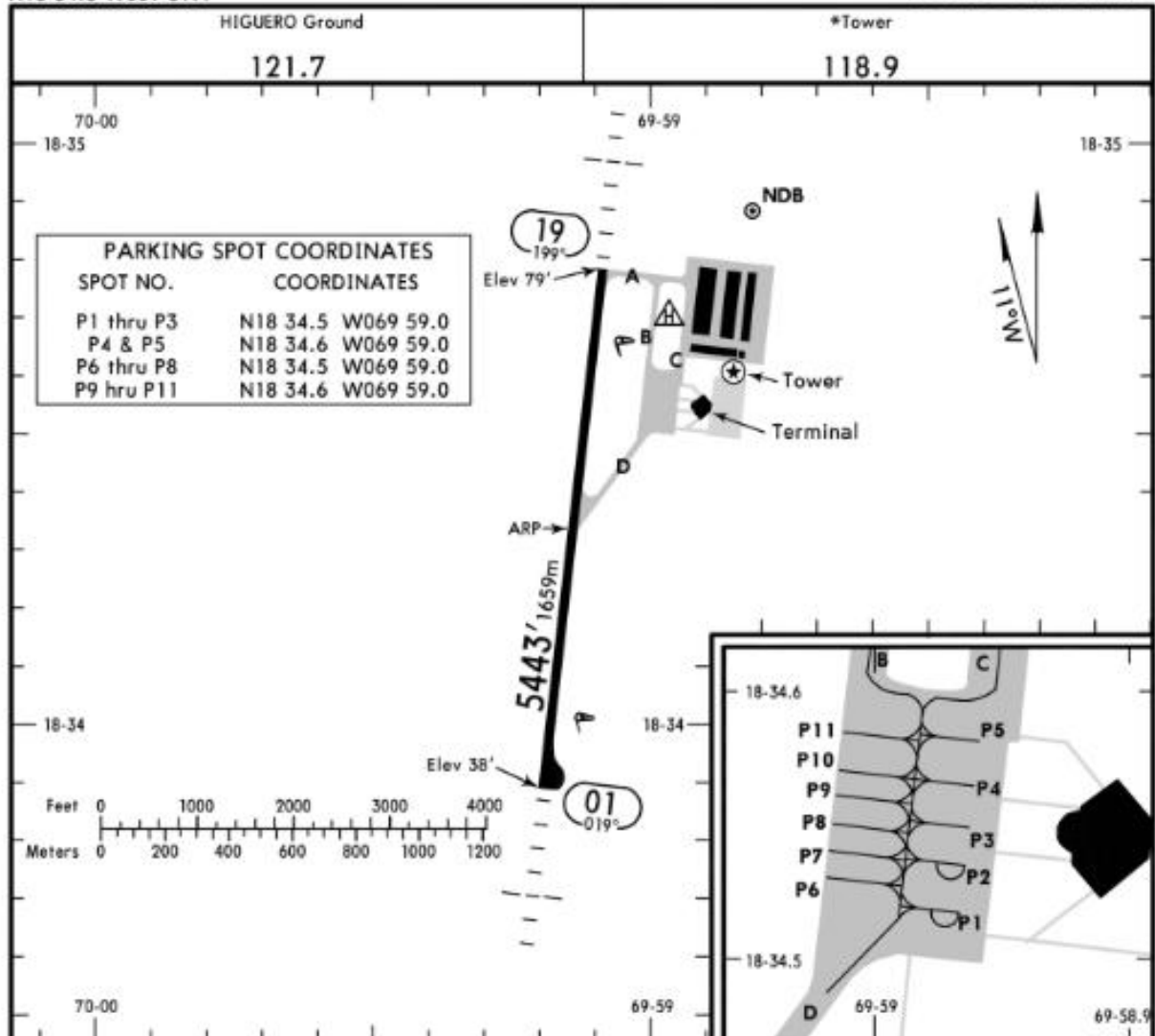
Apt Elev 79'

N18 34.3 W069 59.1

JEPPESEN

23 OCT 15 (20-9)

SANTO DOMINGO/
EL HIGUERO, DOM REP
EL HIGUERO INTL



ADDITIONAL RUNWAY INFORMATION

RWY	LANDING BEYOND	USABLE LENGTHS		TAKE-OFF	WIDTH
		Threshold	Glide Slope		
01 19	HIRL ALS PAPI-L (angle 3.0°)				98' 30m

TAKE-OFF	
All Rwys	
1 & 2 Eng	Available Landing Minimums
3 & 4 Eng	

CHANGES: Location name clarified, mag var. © JEPPESEN, 2006, 2015. ALL RIGHTS RESERVED.

NAVIGRAPH CHARTS INTENDED FOR FLIGHT SIMULATION ONLY - NOT FOR NAVIGATIONAL USE

MDJB

JEPPESEN

SANTO DOMINGO/
EL HIGUERO, DOM REP
RNAV (GNSS) Rwy 01

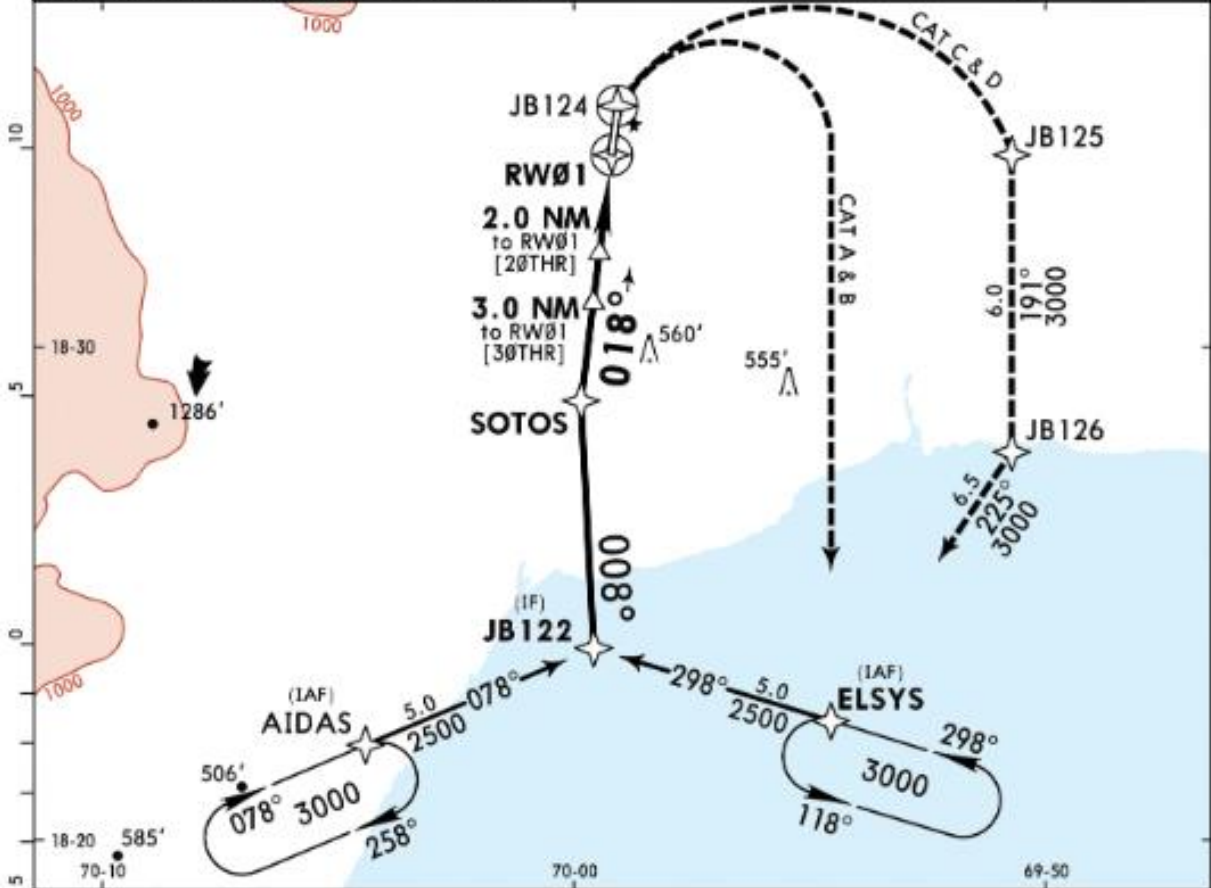
EL HIGUERO INTL

20 MAR 20

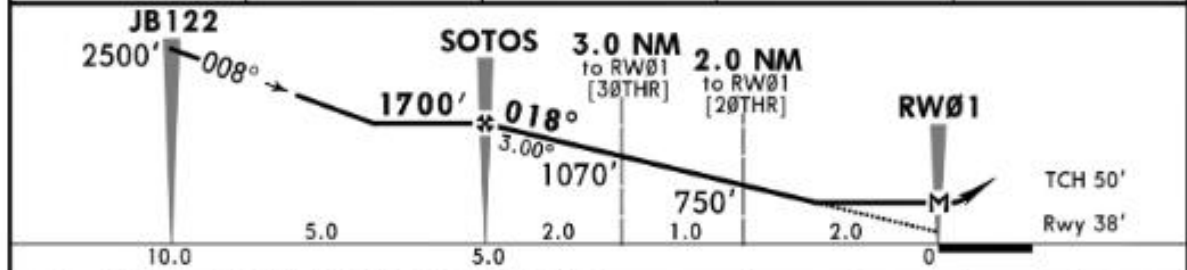
22-1

Eff 26 Mar

LAS AMERICAS Approach 119.3		*HIGUERO Tower 118.9		Ground 121.7	
RNAV	Final Apc Crs 018°	SOTOS 1700' (1662')	MDA(H) 650' (612')	Apt Elev 79' Rwy 38'	
<p>MISSED APCH: CAT A & B: Climb to 3000' on track 018° to JB124; RIGHT turn direct to ELSYS and hold; or in accordance with ATC instructions. CAT C & D: Climb to 3000' on track 018° to JB124; RIGHT turn via JB125 and JB126 direct to ELSYS and hold, or in accordance with ATC instructions.</p>					
Alt Set: hPa		Rwy Elev: 1 hPa	Trans level: FL 180	Trans alt: 17000'	
T. Timing not authorized for defining the MAP.					MSA ARP



NM to RW01	5.0	4.0	3.0	2.0
ALTITUDE	1700'	1380'	1070'	750'



Gnd speed-Kts	70	90	100	120	140	160	ALS PAPI-L	3000'	on 018°	JB124
Descent Angle 3.00°	372	478	531	637	743	849				
MAP at RW01										

STRAIGHT-IN LANDING RWY 01
MDA(H) **650'** (612')

A	1.6 km
B	2.8 km
C	2.8 km
D	3.2 km

CHANGES: Missed approach instructions, chart format. © JEPPESEN, 2016, 2020. ALL RIGHTS RESERVED.

NAVIGRAPH CHARTS INTENDED FOR FLIGHT SIMULATION ONLY - NOT FOR NAVIGATIONAL USE

MDJB

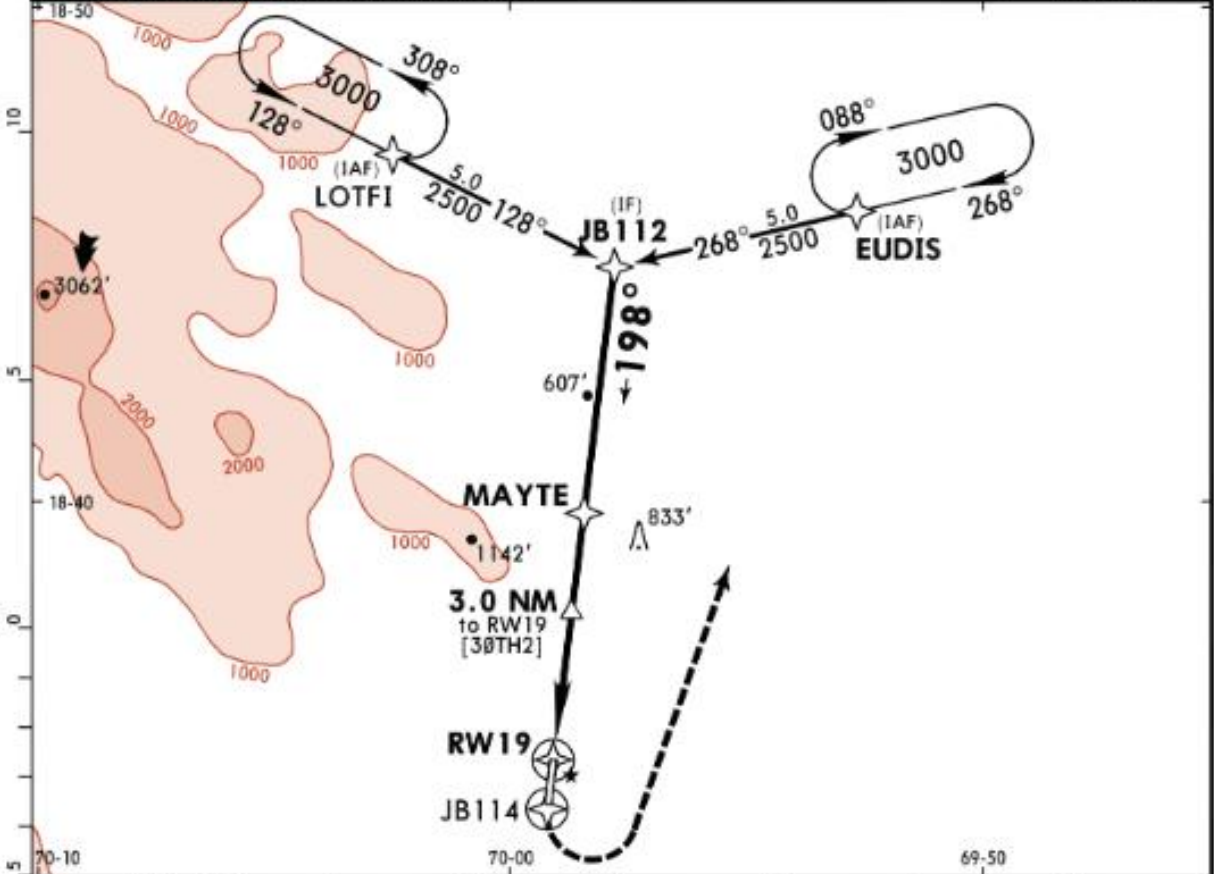
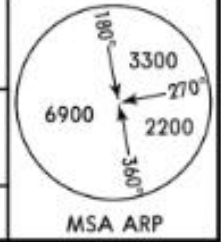
JEPPESEN

SANTO DOMINGO/
EL HIGUERO, DOM REP
RNAV (GNSS) Rwy 19

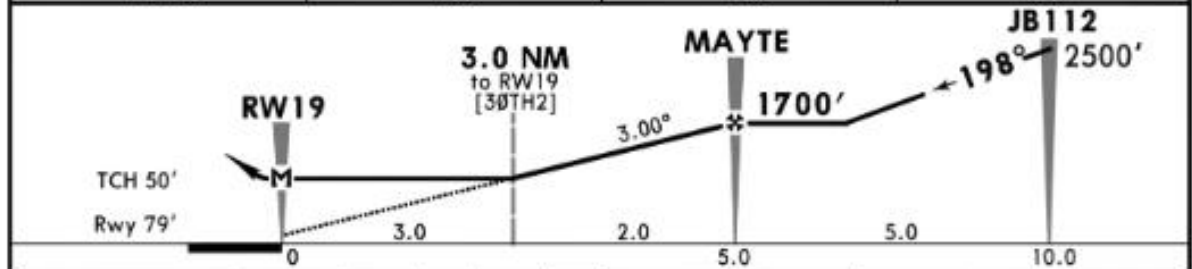
EL HIGUERO INTL

20 MAR 20 **22-2** Eff 26 Mar

LAS AMERICAS Approach 119.3		*HIGUERO Tower 118.9		Ground 121.7	
RNAV	Final ApcH Crs 198°	Minimum Alt MAYTE 1700' (1621')	MDA(H) 1070' (991')	Apt Elev 79' Rwy 79'	
MISSED APCH: Climb to 3000' on track 198° to JB114, LEFT turn direct to EUDIS and hold, or in accordance with ATC instructions.					
Alt Set: hPa		Rwy Elev: 3 hPa	Trans level: FL 180	Trans alt: 17000'	
1. Timing not authorized for defining the MAP.					



NM to RW19	3.0	4.0	5.0
ALTITUDE	1070'	1380'	1700'



Gnd speed-Kts	70	90	100	120	140	160	ALS PAPI-L 3000' ↑ on 198° JB114
Descent Angle 3.00°	372	478	531	637	743	849	
MAP at RW19							

STRAIGHT-IN LANDING RWY 19
MDA(H) **1070'** (991')
ALS out

A	2.0 km
B	2.4 km
C	
D	4.8 km

CHANGES: Chart format. © JEPPESEN, 2016, 2020. ALL RIGHTS RESERVED.

NAVIGRAPH CHARTS INTENDED FOR FLIGHT SIMULATION ONLY - NOT FOR NAVIGATIONAL USE

MDJB

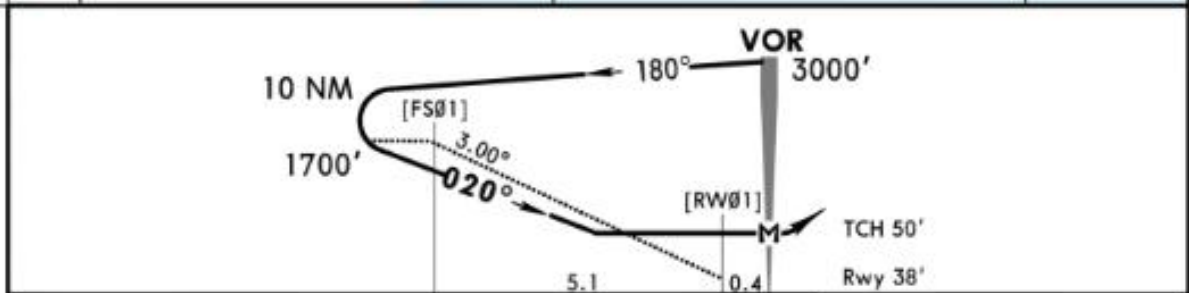
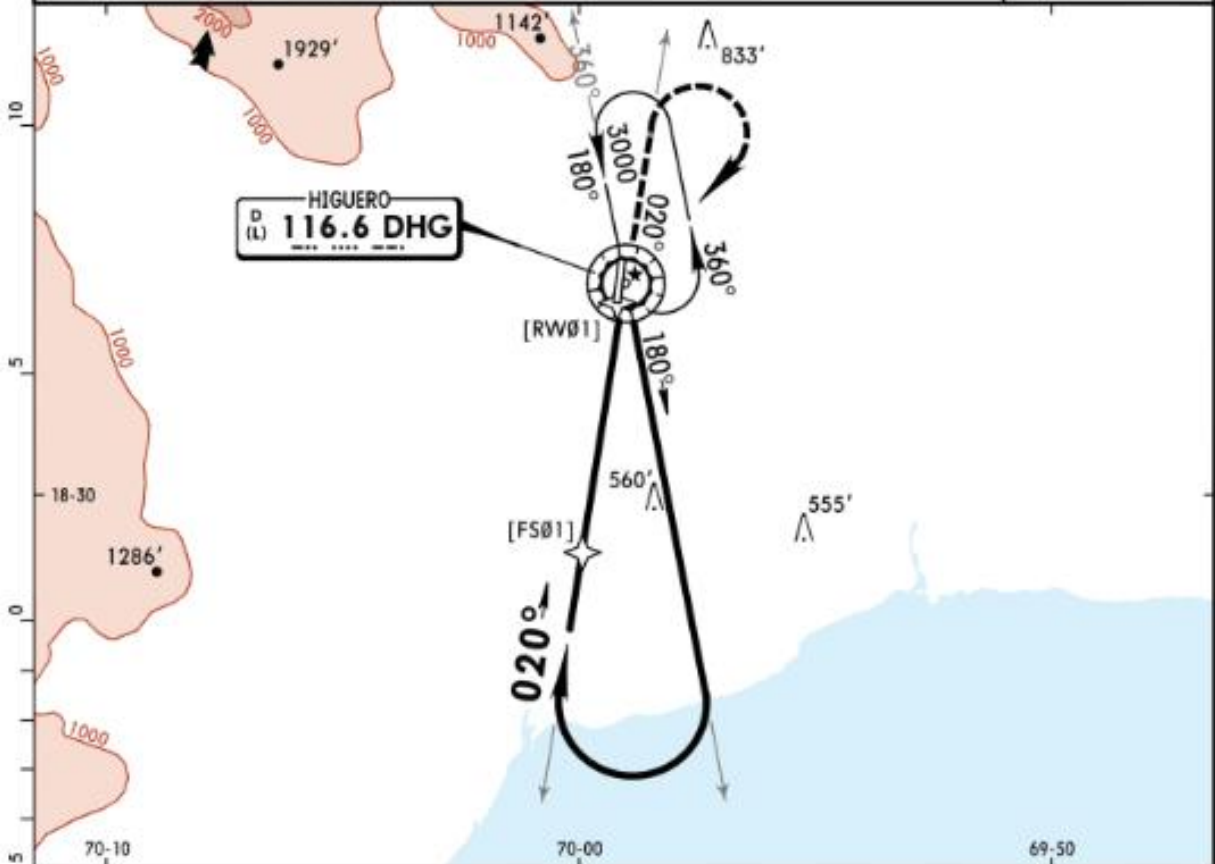
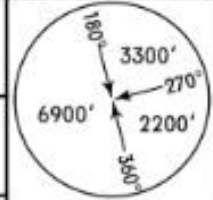
JEPPESEN

SANTO DOMINGO/
EL HIGUERO, DOM REP
VOR Rwy 01

23 FEB 18 (23-3) Eff 1 Mar

EL HIGUERO INTL

LAS AMERICAS Approach 119.3		*HIGUERO Tower 118.9		Ground 121.7	
VOR DHG 116.6	Final Apch Crs 020°	No FAF	MDA(H) 650' (612')	Apt Elev 79' Rwy 38'	
MISSED APCH: Climb to 2000' on DHG VOR R-020, then RIGHT turn to DHG VOR climbing to 3000' and hold, or in accordance with ATC instructions.					
Alt Set: hPa		Rwy Elev: 1 hPa		Trans level: FL 180	
1. Remain within 10 NM from DHG VOR.				Trans alt: 17000'	



Gnd speed-Kts	70	90	100	120	140	160	ALS PAPI-L	2000' ↑ DHG on 116.6 R-020
Descent Angle 3.00°	372	478	531	637	743	849		
MAP at VOR								

STRAIGHT-IN LANDING RWY 01		CEILING REQUIRED		CIRCLE-TO-LAND RWY 19	
MDA(H) 650' (612')		ALS out		Max Kts	MDA(H) CEIL-VIS
CEILING-VISIBILITY				100	1540' (1461') 800' - 2.8 km
700' - 2.4 km				135	1540' (1461') 800' - 2.8 km
700' - 2.8 km				180	1540' (1461') 800' - 3.7 km
700' - 3.2 km				205	1540' (1461') 800' - 4.6 km

CHANGES: Missed apch, radial added. © JEPPESEN, 2017, 2018. ALL RIGHTS RESERVED.

NAVIGRAPH CHARTS INTENDED FOR FLIGHT SIMULATION ONLY - NOT FOR NAVIGATIONAL USE

MDJB

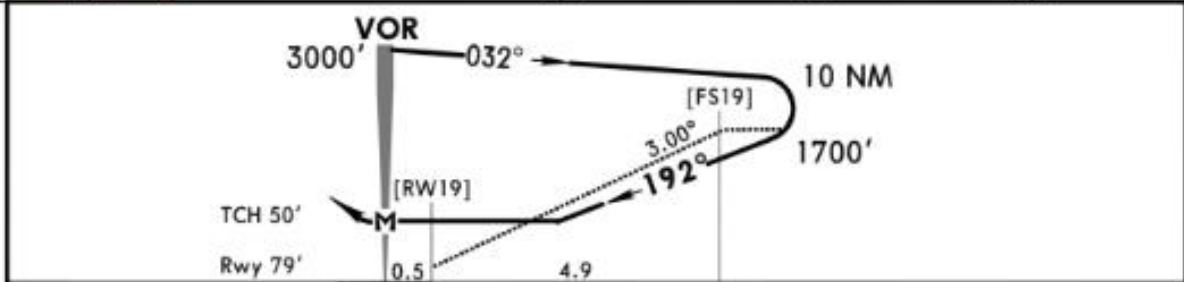
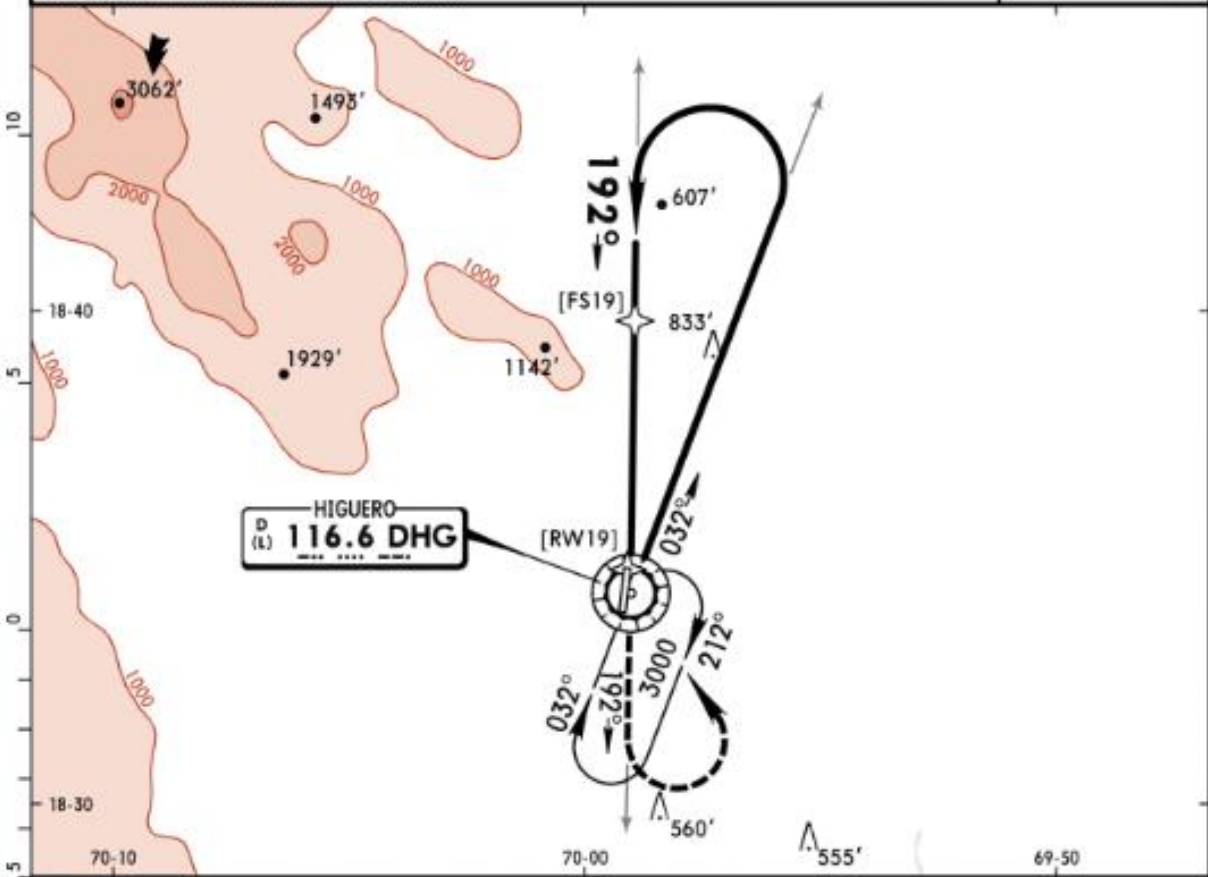
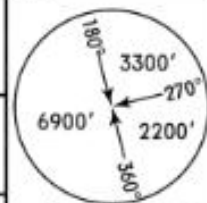
JEPPESEN

SANTO DOMINGO/
EL HIGUERO, DOM REP
VOR Rwy 19

23 FEB 18 (23-4) Eff 1 Mar

EL HIGUERO INTL

LAS AMERICAS Approach 119.3		*HIGUERO Tower 118.9		Ground 121.7	
VOR DHG 116.6	Final Apch Crs 192°	No FAF	MDA(H) 1180' (1101')	Apt Elev 79' Rwy 79'	
MISSED APCH: Climb to 2000' on DHG VOR R-192, then LEFT turn to DHG VOR climbing to 3000' and hold, or in accordance with ATC instructions.					
Alt Set: hPa		Rwy Elev: 3 hPa	Trans level: FL 180	Trans alt: 17000'	
1. Remain within 10 NM from DHG VOR.					



Grnd speed-Kts	70	90	100	120	140	160	ALS PAPI-L	2000' on 116.6 R-192
Descent Angle 3.00°	372	478	531	637	743	849		
MAP at VOR								

STRAIGHT-IN LANDING RWY 19		CEILING REQUIRED		CIRCLE-TO-LAND RWY01	
MDA(H) 1180' (1101')		ALS out		Max Kts	MDA(H) CEIL-VIS
A	CEILING-VISIBILITY			100	1540' (1461') 800' - 2.8 km
B	700' - 2.4 km			135	1540' (1461') 800' - 2.8 km
C	700' - 2.8 km			180	1540' (1461') 800' - 3.7 km
D	700' - 3.2 km			205	1540' (1461') 800' - 4.6 km

PANS OPS

CHANGES: None.

© JEPPESEN, 2017. ALL RIGHTS RESERVED.

NAVIGRAPH CHARTS INTENDED FOR FLIGHT SIMULATION ONLY - NOT FOR NAVIGATIONAL USE

MDJB

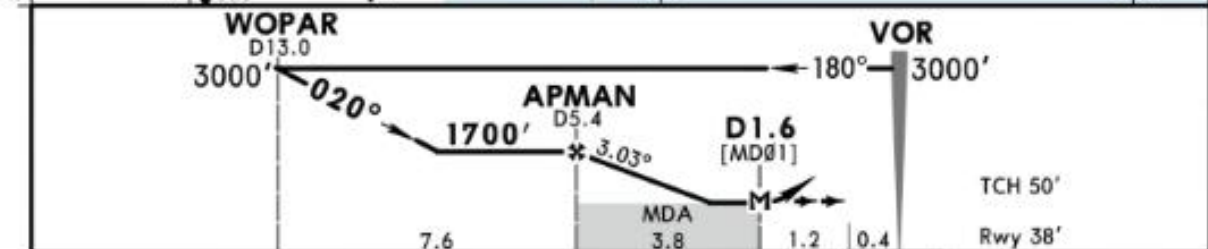
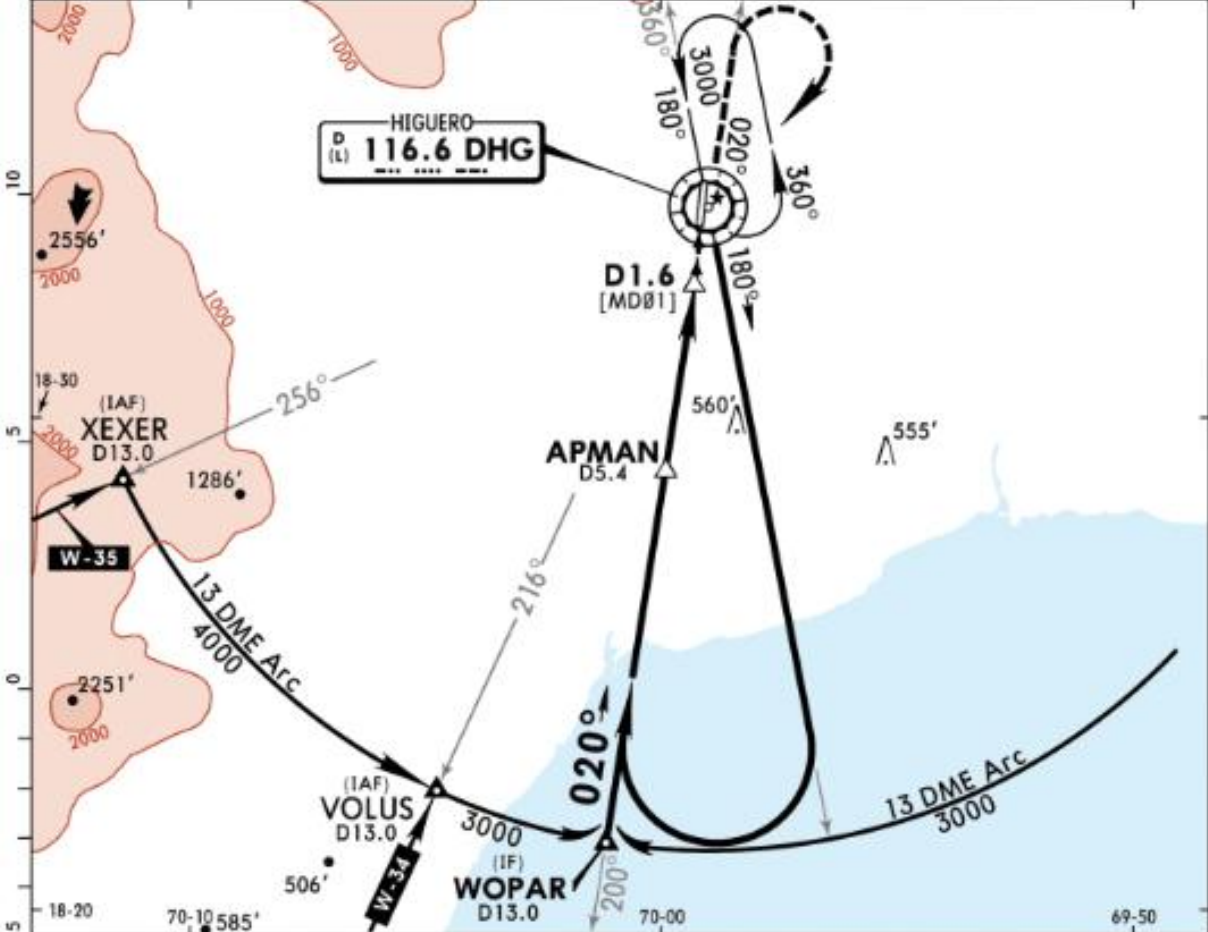
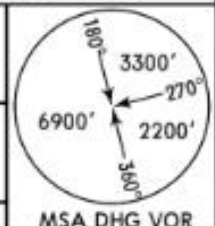
JEPPESEN

23 FEB 18 (23-1) Eff 1 Mar

SANTO DOMINGO/
EL HIGUERO, DOM REP
VOR DME Rwy 01

EL HIGUERO INTL

LAS AMERICAS Approach 119.3		*HIGUERO Tower 118.9		Ground 121.7	
VOR DHG 116.6	Final Apch Crs 020°	Minimum Alt APMAN 1700' (1662')	MDA(H) 650' (612')	Apt Elev 79' Rwy 38'	
MISSED APCH: Climb to 2000' on DHG VOR R-020, then RIGHT turn to DHG VOR climbing to 3000' and hold, or in accordance with ATC instructions.					
Alt Set: hPa		Rwy Elev: 1 hPa		Trans level: FL 180	
				Trans alt: 17000'	



Gnd speed-Kts	70	90	100	120	140	160	ALS PAPI-L	2000' on 116.6 R-020
Descent Angle 3.03°	375	482	536	643	750	858		
MAP at D1.6								

STRAIGHT-IN LANDING RWY 01		CEILING REQUIRED		CIRCLE-TO-LAND RWY 19	
MDA(H) 650' (612')		ALS out		Max Kts	MDA(H) CEIL-VIS
A	700' - 2.4 km	100	1540' (1461')	800' - 2.8 km	
B	700' - 2.8 km	135	1540' (1461')	800' - 3.7 km	
C	700' - 3.2 km	180	1540' (1461')	800' - 4.6 km	
D	700' - 3.2 km	205	1540' (1461')	800' - 4.6 km	

CHANGES: Radial added. © JEPPESEN, 2017, 2018. ALL RIGHTS RESERVED.

NAVIGRAPH CHARTS INTENDED FOR FLIGHT SIMULATION ONLY - NOT FOR NAVIGATIONAL USE

MDJB

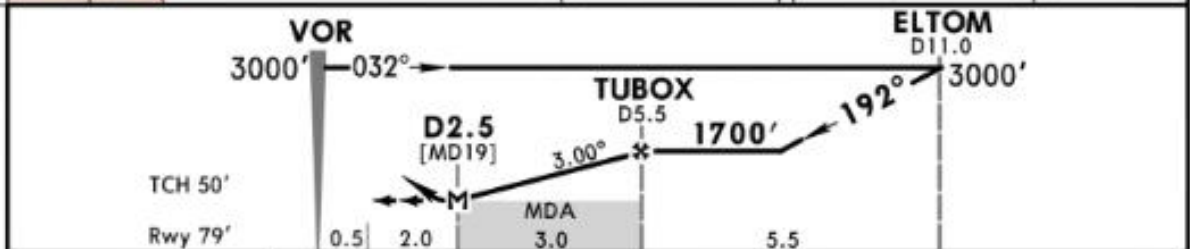
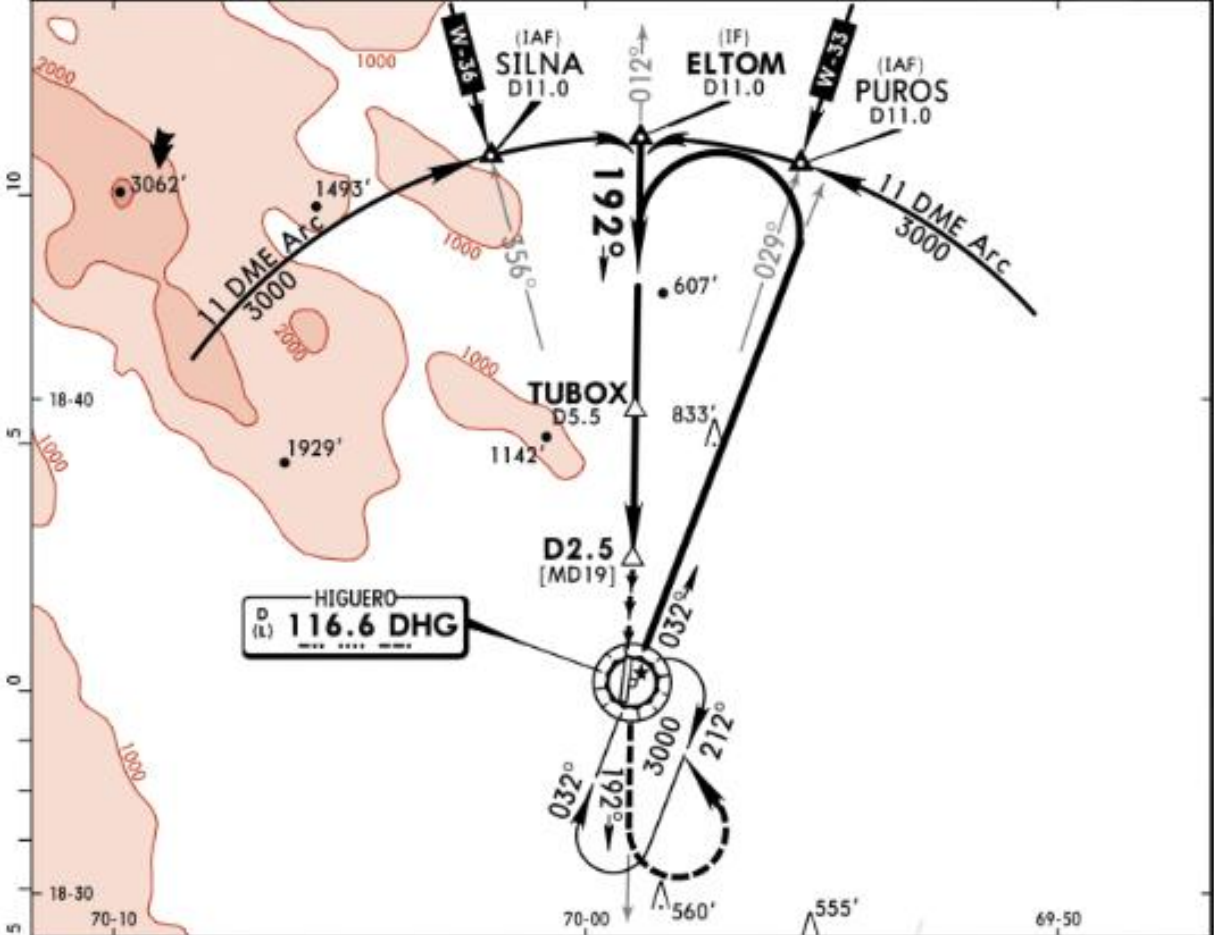
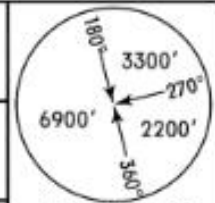
JEPPESEN

SANTO DOMINGO/
EL HIGUERO, DOM REP
VOR DME Rwy 19

23 FEB 18 **23-2** Eff 1 Mar

EL HIGUERO INTL

LAS AMERICAS Approach 119.3		*HIGUERO Tower 118.9		Ground 121.7
VOR DHG 116.6	Final Apch Crs 192°	Minimum Alt TUBOX 1700' (1621')	MDA(H) 1180' (1101')	Apt Elev 79' Rwy 79'
MISSED APCH: Climb to 2000' on DHG VOR R-192, then LEFT turn to DHG VOR climbing to 3000' and hold, or in accordance with ATC instructions.				
Alt Set: hPa	Rwy Elev: 3 hPa	Trans level: FL 180	Trans alt: 17000'	MSA DHG VOR



Grnd speed-Kts	70	90	100	120	140	160	ALS PAPI-L	2000' ↑ DHG on 116.6 R-192
Descent Angle 3.00°	372	478	531	637	743	849		
MAP at D2.5								

STRAIGHT-IN LANDING RWY 19		CEILING REQUIRED	CIRCLE-TO-LAND RWY 01	
MDA(H) 1180' (1101')		Max Kts	MDA(H)	CEIL-VIS
A	CEILING-VISIBILITY ALS out	100		
B	700' - 2.4 km	135	1540' (1461')	800' - 2.8 km
C	700' - 2.8 km	180	1540' (1461')	800' - 3.7 km
D	700' - 3.2 km	205	1540' (1461')	800' - 4.6 km

CHANGES: None. © JEPPESEN, 2017. ALL RIGHTS RESERVED.

NAVIGRAPH CHARTS INTENDED FOR FLIGHT SIMULATION ONLY - NOT FOR NAVIGATIONAL USE