

RWY	ADDITIONAL RUNWAY INFORMATION				
		USABLE LENGTHS		WIDTH	
		LANDING BEYOND Threshold	Glide Slope		TAKE-OFF
07	HIRL SSALR REIL PAPI (angle 3.0°)	9514' 2900m		9514' 2900m	148'
25	HIRL REIL PAPI (angle 3.0°)				45m

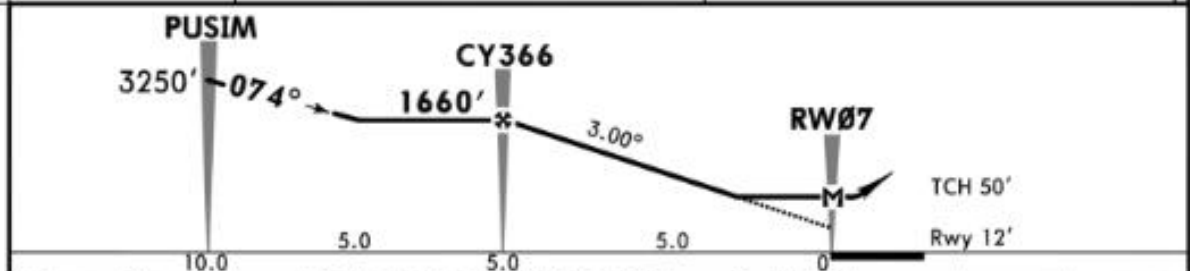
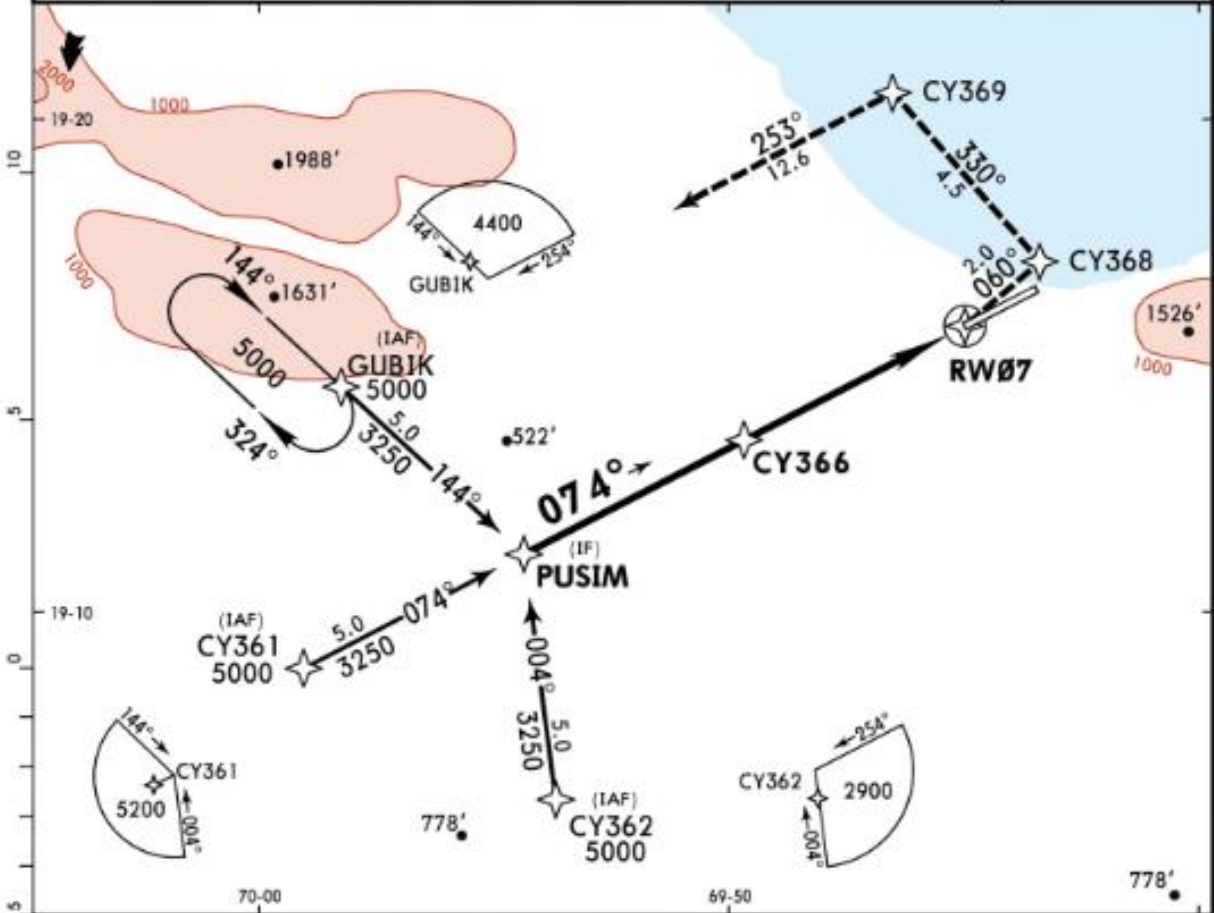
	<b>TAKE-OFF</b>	
	<b>All Rwys</b>	
1 & 2 Eng	Available Landing Minimums	
3 & 4 Eng		

MDCY/AZS  
EL CATEY INTL

JEPPESEN  
20 MAR 20 (12-1) Eff 26 Mar

SAMANA, DOM REP  
RNAV (GNSS) Rwy 07

ATIS 132.65		CIBAO Approach 119.0		CATEY Tower 118.35		Ground 121.7		
RNAV	Final Apch Crs <b>074°</b>	<b>CY366</b> 1660' (1648')	MDA(H) <b>620'</b> (608')	Apt Elev 12' Rwy 12'		TAA 30 NM IAF		
MISSED APCH: Proceed climbing to CY368 on track 060°, LEFT climbing turn to CY369, proceed to GUBIK with 5000' on track 253° and hold, or according to ATC instructions.								
Alt Set: hPa		Rwy Elev: 0 hPa		Trans level: FL 180				Trans alt: 17000'
1. DME/DME to RNP 0.30 required.								



Gnd speed-Kts	70	90	100	120	140	160	PAPI SSALR REIL	↑ on <b>060°</b> <b>CY368</b>
Descent Angle	3.00°	372	478	531	637	743		
MAP at RWY 07								

STRAIGHT-IN LANDING RWY 07			<b>CEILING REQUIRED</b>	CIRCLE-TO-LAND RWY 25				
MDA(H) <b>620'</b> (608')		RAIL out		ALS out		Max Kts		
CEILING-VISIBILITY								
A	700' - 2.4 km					100	700' (688')	700' - 2.4 km
B	700' - 2.8 km					135	1000' (988')	1000' - 2.8 km
C	700' - 2.8 km					180	2100' (2088')	2100' - 4.6 km
D	700' - 3.6 km					205		

PANS OPS

CHANGES: Communications, chart format. © JEPPESEN, 2010, 2020. ALL RIGHTS RESERVED.

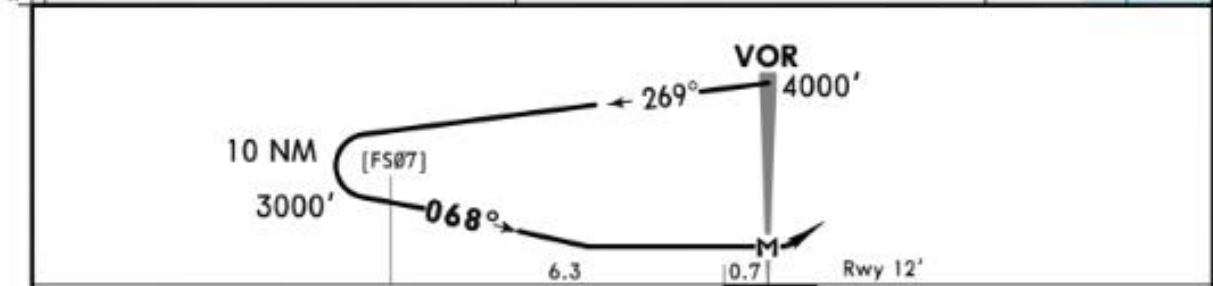
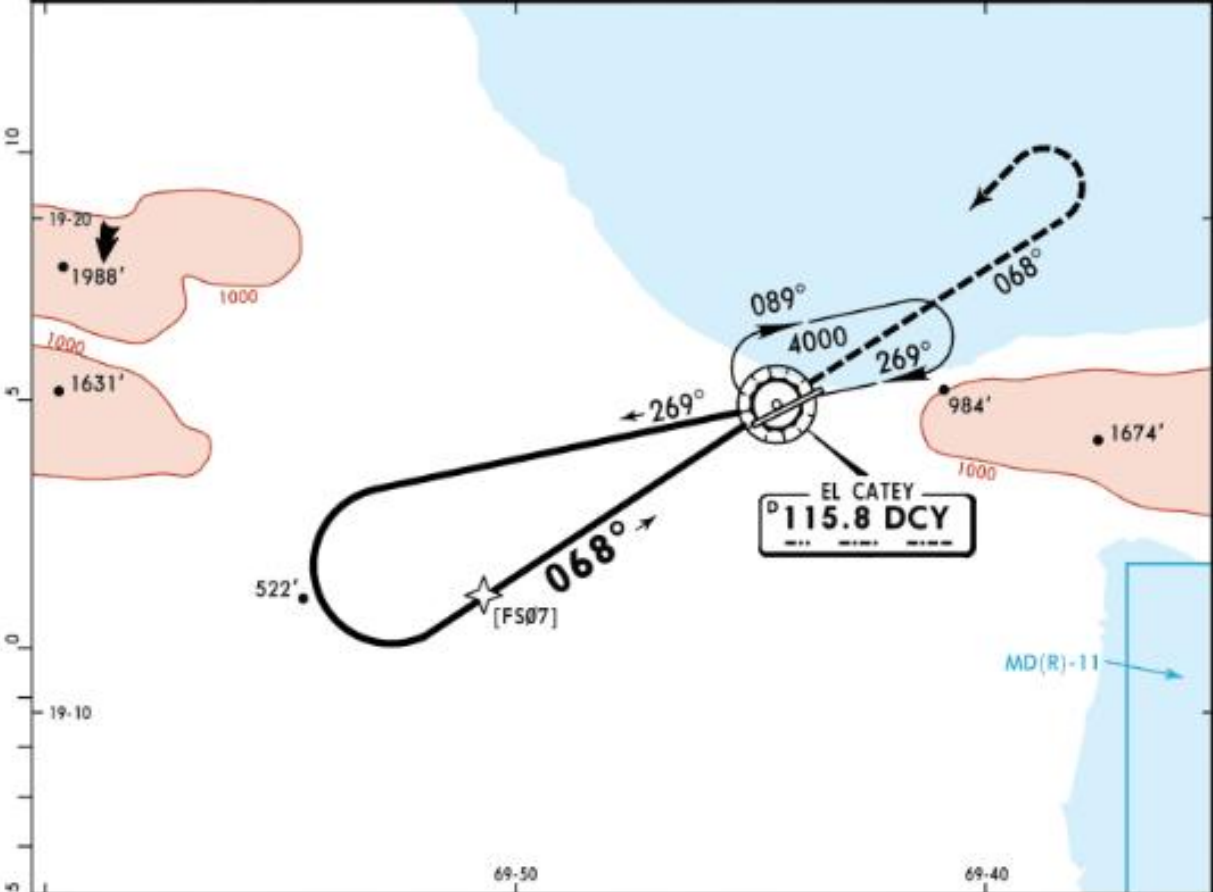
NAVIGRAPH CHARTS INTENDED FOR FLIGHT SIMULATION ONLY - NOT FOR NAVIGATIONAL USE

MDCY/AZS  
EL CATEY INTL

JEPPESEN  
20 MAR 20 **13-2** Eff 26 Mar

SAMANA, DOM REP  
VOR Rwy 07

ATIS 132.65		CIBAO Approach 119.0		CATEY Tower 118.35		Ground 121.7	
VOR DCY <b>115.8</b>	Final Apch Crs <b>068°</b>	No FAF		MDA(H) <b>820'</b> (808')	Apt Elev 12' Rwy 12'		
<b>MISSED APCH:</b> Climb outbound on DCY VOR R-068 until 2000', then LEFT climbing turn to DCY VOR with 4000', or according to ATC instructions.							
Alt Set: hPa		Rwy Elev: 0 hPa		Trans level: FL 180		Trans alt: 17000'	
							MSA DCY VOR



MAP at VOR				PAPI SSALR	2000'	DCY
				REIL	↑	on 115.8
						<b>R-068</b>

STRAIGHT-IN LANDING RWY 07			<b>CEILING REQUIRED</b>	CIRCLE-TO-LAND RWY 25		
MDA(H) <b>820'</b> (808')						
	RAIL out	ALS out	Max Kts	MDA(H)	CEIL-VIS	
A	900' - 2.0 km		100	820' (808')	900' - 2.0 km	
B			135	1000' (988')	1000' - 2.8 km	
C	900' - 3.6 km		180			
D	900' - 4.0 km		205	2100' (2088')	2100' - 4.6 km	

CHANGES: Communications, CNF added, chart format. © JEPPESEN, 2006, 2020. ALL RIGHTS RESERVED.

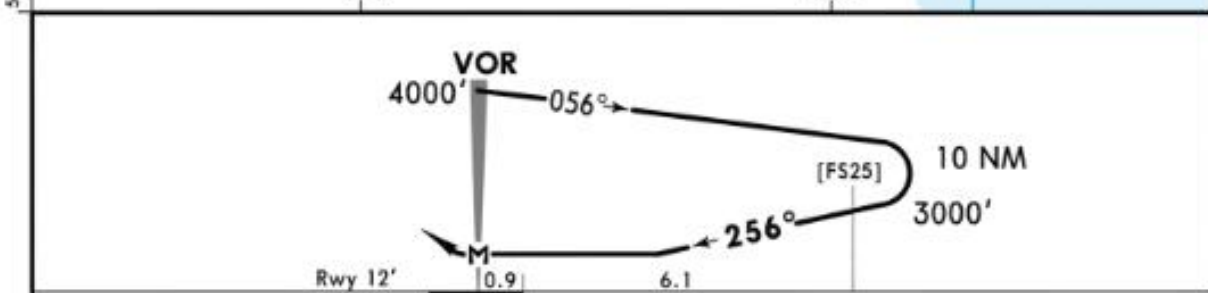
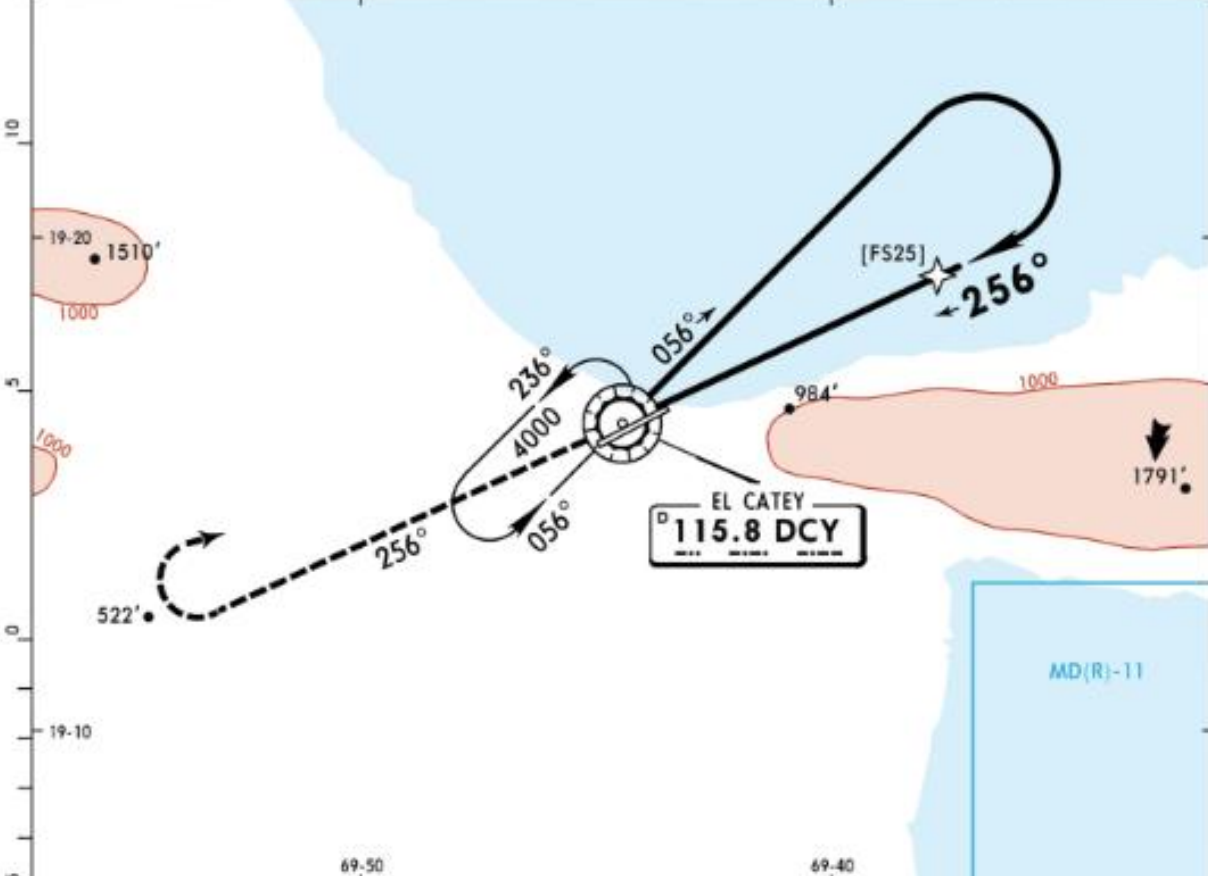
**NAVIGRAPH CHARTS INTENDED FOR FLIGHT SIMULATION ONLY - NOT FOR NAVIGATIONAL USE**

MDCY/AZS  
EL CATEY INTL

JEPPESEN  
20 MAR 20 **13-4** Eff 26 Mar

SAMANA, DOM REP  
VOR Rwy 25

ATIS 132.65		CIBAO Approach 119.0		CATEY Tower 118.35		Ground 121.7	
VOR DCY <b>115.8</b>	Final Apch Crs <b>256°</b>	No FAF		MDA(H) <b>1100'</b> (1088')	Apt Elev 12' Rwy 12'		
<b>MISSED APCH:</b> Climb outbound on DCY VOR R-256 until 3000', then <b>RIGHT</b> climbing turn to 4000' to DCY VOR holding pattern, or according to ATC instructions.							
Alt Set: hPa		Rwy Elev: 0 hPa		Trans level: FL 180		Trans alt: 17000'	



MAP at VOR	REIL PAPI	3000'	DCY
		↑	on 115.8
			<b>R-256</b>

STRAIGHT-IN LANDING RWY 25 <b>CEILING REQUIRED</b>		CIRCLE-TO-LAND RWY 07	
MDA(H) <b>1100'</b> (1088')			
CEILING-VISIBILITY		Max Kts	MDA(H) CEIL-VIS
A	1100' - 2.8 km	100	1100' (1088') 1100' - 3.5 km
B		135	
C	1100' - 4.8 km	180	2100' (2088') 2100' - 5.2 km
D	1100' - 5.2 km	205	

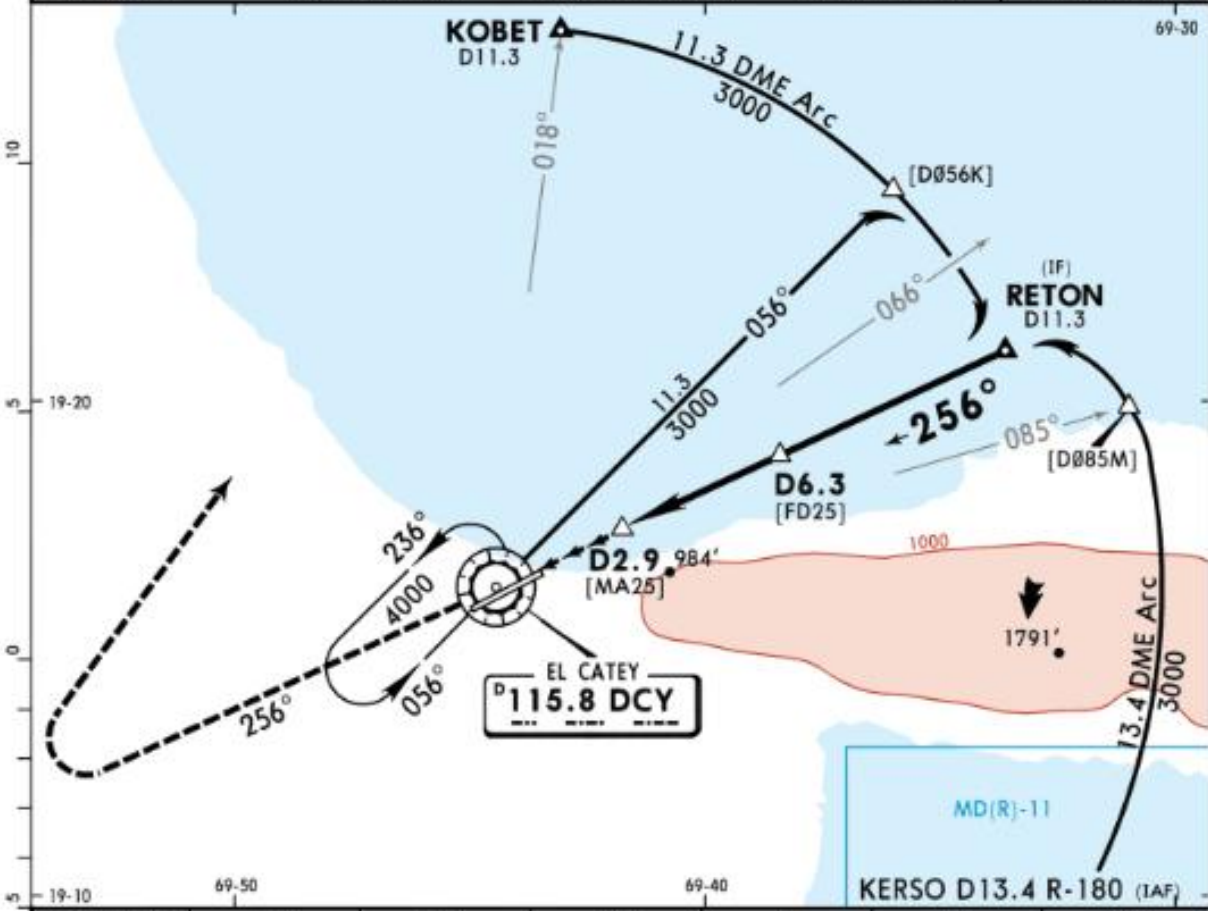


MDCY/AZS  
EL CATEY INTL

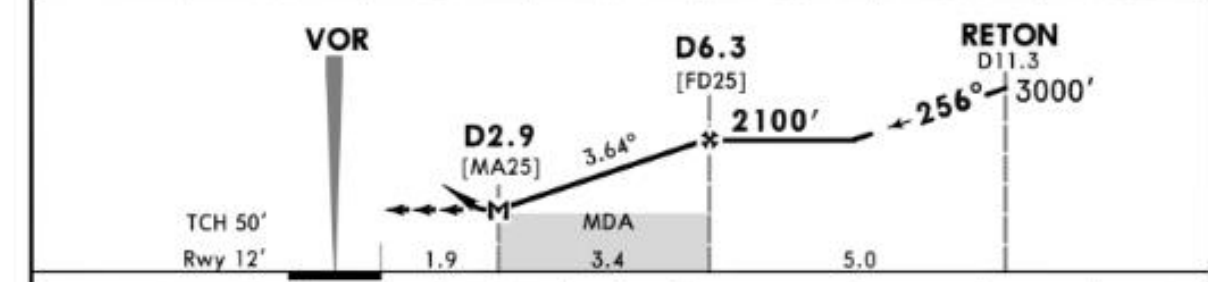
JEPPESEN  
20 MAR 20 **13-3** Eff 26 Mar

SAMANA, DOM REP  
VOR DME Rwy 25

ATIS 132.65		CIBAO Approach 119.0		CATEY Tower 118.35		Ground 121.7	
VOR DCY <b>115.8</b>	Final Apch Crs <b>256°</b>	D6.3 <b>2100'</b> (2088')	MDA(H) <b>760'</b> (748')	Apt Elev 12' Rwy 12'			
<b>MISSED APCH:</b> Climb outbound on DCY VOR R-256 until 3000', then <b>RIGHT</b> turn direct to KOBET, or according to ATC instructions.							MSA DCY VOR
Alt Set: hPa		Rwy Elev: 0 hPa		Trans level: FL 180		Trans alt: 17000'	



FAF to MAP	MAP	2.0	3.0	4.0	5.0	FAF
ALTITUDE	760'	834'	1219'	1605'	1991'	2100'



Gnd speed-Kts	70	90	100	120	140	160	REIL PAPI	<b>3000'</b> DCY on <b>115.8</b> <b>R-256</b>	
Descent Angle	3.64°	451	580	644	773	902			1031
MAP at D2.9 or FAF to MAP	3.4	2:55	2:16	2:02	1:42	1:27			1:16

STRAIGHT-IN LANDING RWY 25		<b>CEILING REQUIRED</b>		CIRCLE-TO-LAND RWY 07	
MDA(H) <b>760'</b> (748')					
PANS OPS	CEILING-VISIBILITY		Max Kts	MDA(H)	CEIL-VIS
	A	800' - 2.0 km	100	760' (748')	800' - 2.8 km
	B	800' - 3.6 km	135	1000' (988')	1000' - 2.8 km
	D	800' - 4.0 km	205	2100' (2088')	2100' - 4.6 km

CHANGES: Communications, descent angle, chart format. © JEPPESEN, 2006, 2020. ALL RIGHTS RESERVED.

**NAVIGRAPH CHARTS INTENDED FOR FLIGHT SIMULATION ONLY - NOT FOR NAVIGATIONAL USE**