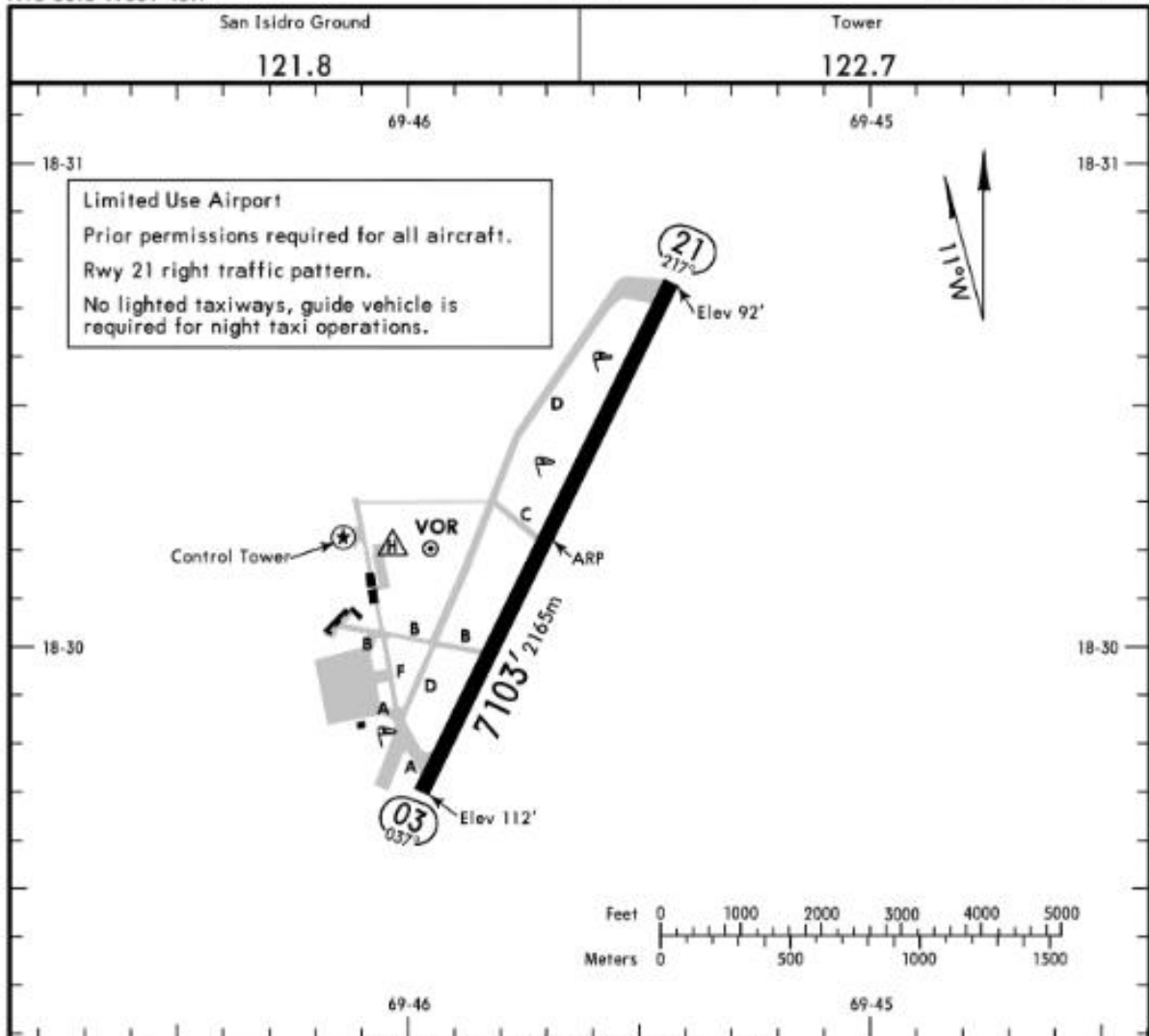


MDSI
 Apt Elev **112'**
 N18 30.2 W069 45.7

JEPPESEN 7 SEP 18 **(10-9)** Eff 13 Sep

SAN ISIDRO, DOM REP
SAN ISIDRO AB



ADDITIONAL RUNWAY INFORMATION

RWY		USABLE LENGTHS			WIDTH
		Threshold	Landing Beyond Glide Slope	TAKE-OFF	
03	RL PAPI-L (angle 3.0°)				197'
21	RL PAPI-L (angle 3.0°)		6116' 1864m		60m

TAKE-OFF		
All Rwys		
1 & 2 Eng	Available Landing Minimums	
3 & 4 Eng		

CHANGES: Rwy 03/21 length updated.

© JEPPESEN, 2016, 2018. ALL RIGHTS RESERVED.

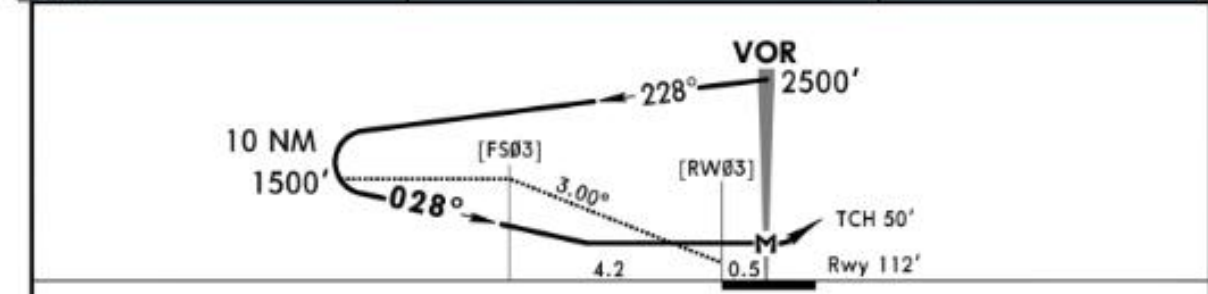
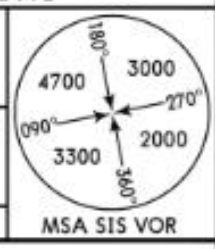
NAVIGRAPH CHARTS INTENDED FOR FLIGHT SIMULATION ONLY - NOT FOR NAVIGATIONAL USE

MDSI
SAN ISIDRO AB

JEPPESEN
20 MAR 20 13-2 Eff 26 Mar

SAN ISIDRO, DOM REP
VOR Rwy 03

LAS AMERICAS Approach		SAN ISIDRO Tower		Ground	
119.3		122.7		121.8	
VOR SIS 112.4	Final Apch Crs 028°	No FAF	MDA(H) 570' (458')	Apt Elev 112' Rwy 112'	
MISSED APCH: Climb on runway heading until 1000' then, climbing LEFT turn to 2500'. Proceed to SIS VOR or in accordance with ATC instructions.					
Alt Set: hPa		Rwy Elev: 0 hPa	Trans level: FL 180	Trans alt: 17000'	



Gnd speed-Kts	70	90	100	120	140	160	PAPI-L	1000' on Rwy hdg	
Descent Angle	3.00°	372	478	531	637	743			849
MAP at VOR									

STRAIGHT-IN LANDING RWY 03		CEILING REQUIRED		CIRCLE-TO-LAND RWY 21		
MDA(H) 570' (458')						
CEILING-VISIBILITY				Max Kts	MDA(H)	CEIL-VIS
A	500' - 1.6 km			100	700' (588')	600' - 2.8 km
B	500' - 2.0 km			135	800' (688')	700' - 4.6 km
C	500' - 2.4 km			180		
D	500' - 2.4 km			205		

CHANGES: Approach frequency added. © JEPPESEN, 2016, 2020. ALL RIGHTS RESERVED.

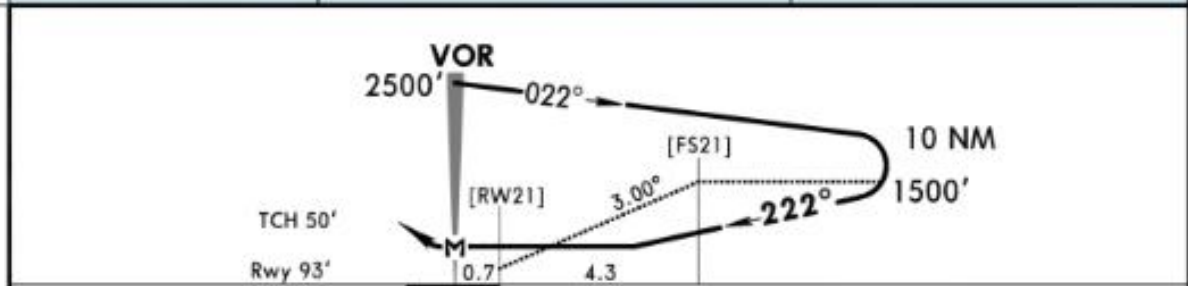
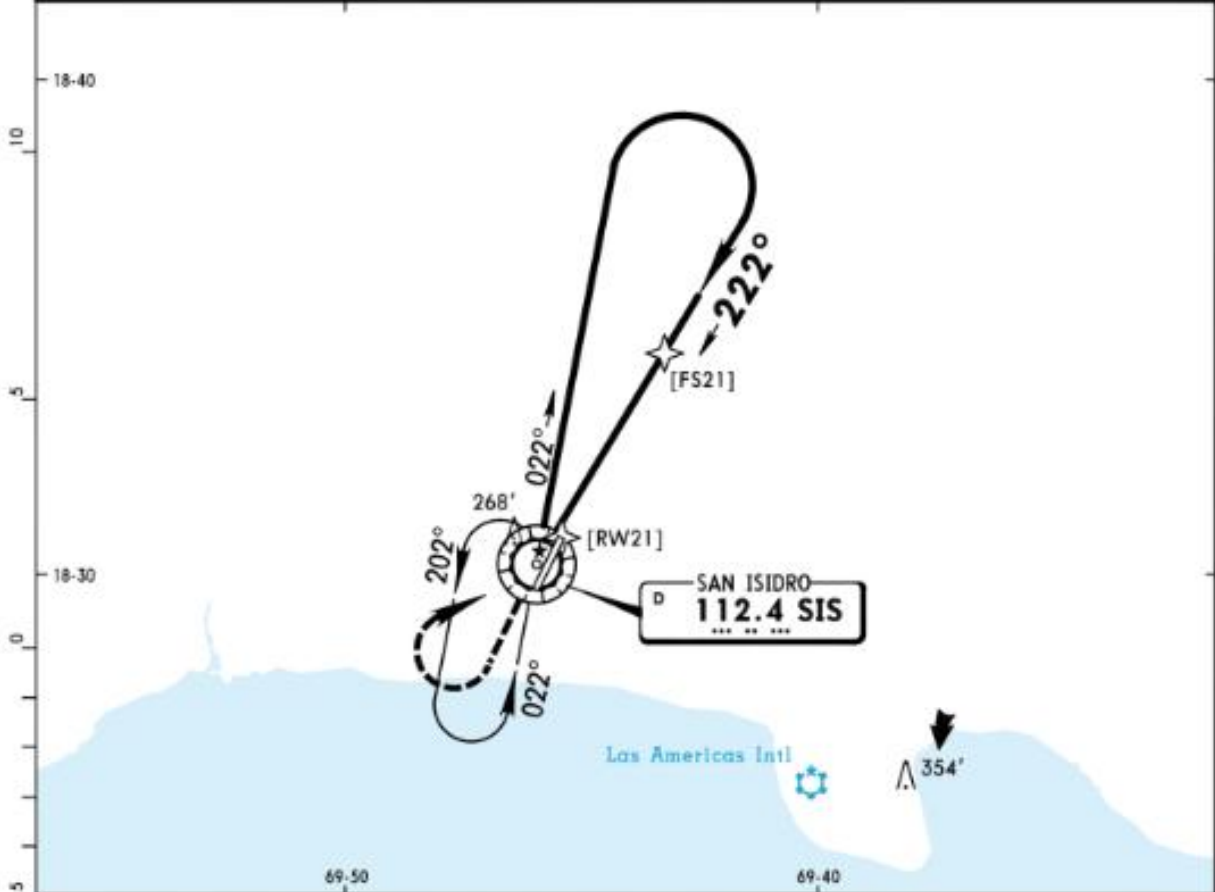
NAVIGRAPH CHARTS INTENDED FOR FLIGHT SIMULATION ONLY - NOT FOR NAVIGATIONAL USE

MDSI
SAN ISIDRO AB

JEPPESEN
20 MAR 20 **13-4** Eff 26 Mar

SAN ISIDRO, DOM REP
VOR Rwy 21

LAS AMERICAS Approach 119.3		SAN ISIDRO Tower 122.7		Ground 121.8	
VOR SIS 112.4	Final Apch Crs 222°	No FAF	MDA(H) 570' (477')	Apt Elev 112' Rwy 93'	
MISSED APCH: Climb on runway heading until 1000' then, climbing RIGHT turn to 2500'. Proceed to SIS VOR or in accordance with ATC instructions.					
Alt Set: hPa	Rwy Elev: 0 hPa	Trans level: FL 180	Trans alt: 17000'		



Gnd speed-Kts	70	90	100	120	140	160	PAPI-L	1000' on RWY hdg
Descent Angle 3.00°	372	478	531	637	743	849		
MAP at VOR								

STRAIGHT-IN LANDING RWY 21		CEILING REQUIRED		CIRCLE-TO-LAND RWY 03	
MDA(H) 570' (477')					
	CEILING-VISIBILITY	Max Kts	MDA(H)	CEIL-VIS	
A	500'- 1.6 km	100	700' (588')	600'- 2.8 km	
B		135			
C	500'- 2.0 km	160	800' (688')	700'- 4.6 km	
D	500'- 2.4 km	205			

CHANGES: Approach frequency added. © JEPPESEN, 2016, 2020. ALL RIGHTS RESERVED.

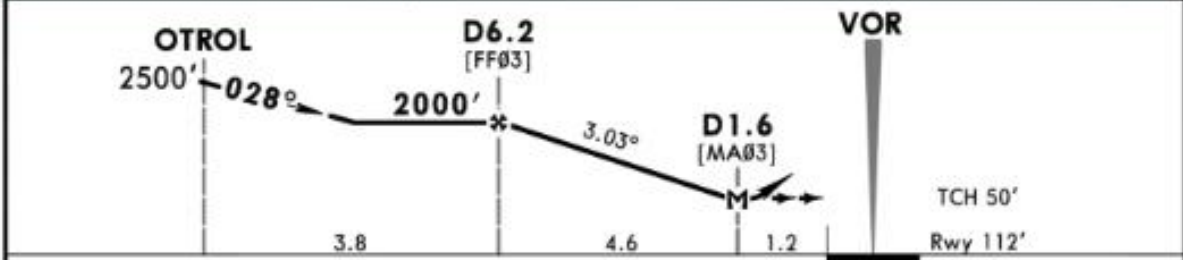
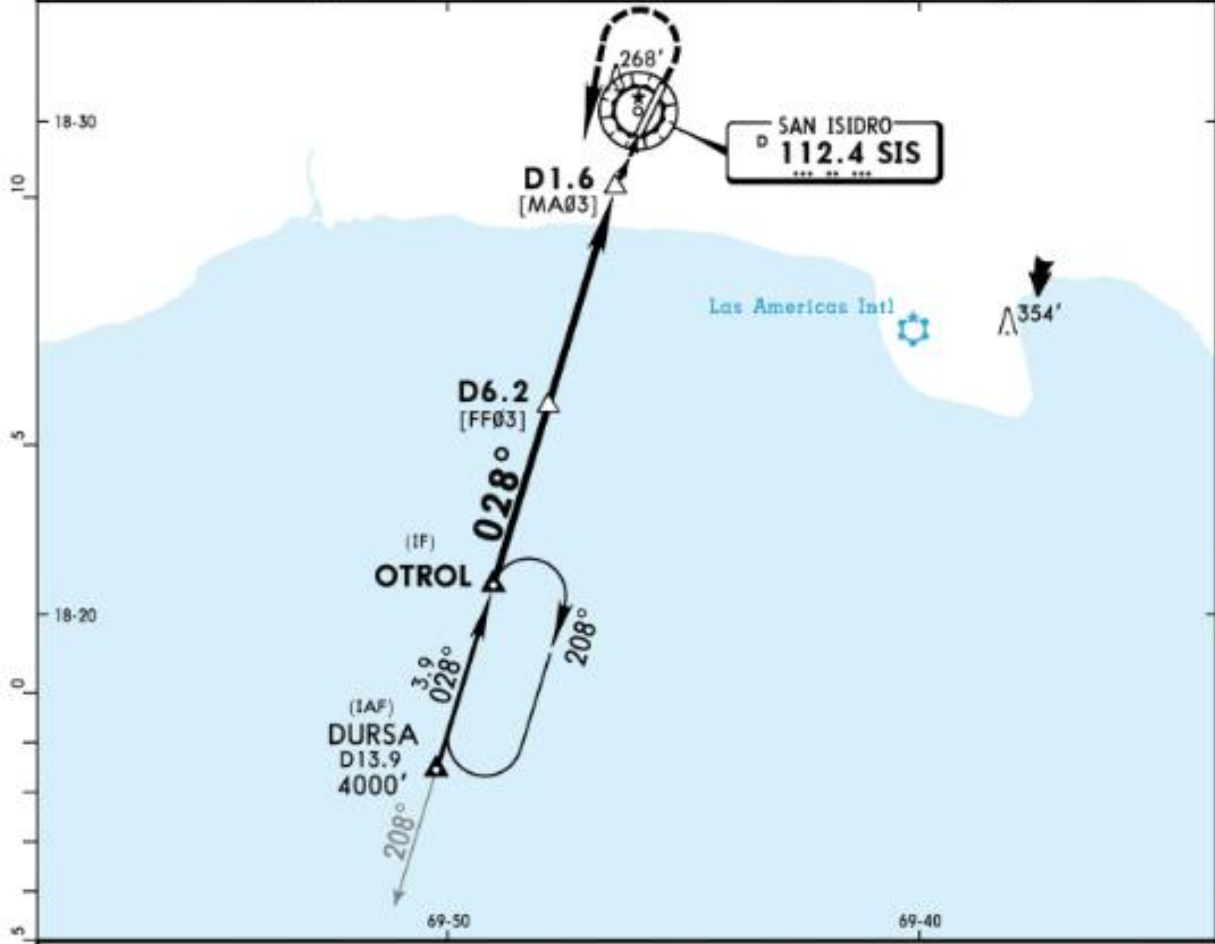
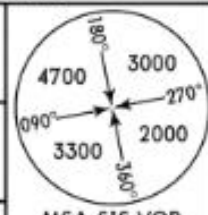
NAVIGRAPH CHARTS INTENDED FOR FLIGHT SIMULATION ONLY - NOT FOR NAVIGATIONAL USE

MDSI
SAN ISIDRO AB

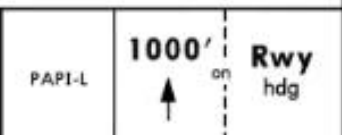
JEPPESEN
20 MAR 20 **13-1** Eff 26 Mar

SAN ISIDRO, DOM REP
VOR DME Rwy 03

LAS AMERICAS Approach 119.3		SAN ISIDRO Tower 122.7		Ground 121.8	
VOR SIS 112.4	Final Apch Crs 028°	Minimum Alt D6.2 2000' (1888')	MDA(H) 550' (438')	Apt Elev 112' Rwy 112'	
MISSED APCH: Climb on runway heading until 1000' then, climbing LEFT turn to 2500'. Proceed to OTROL, or in accordance with ATC instructions.					
Alt Set: hPa		Rwy Elev: 0 hPa		Trans level: FL 180	
				Trans alt: 17000'	
					MSA SIS VOR



Grnd speed-Kts	70	90	100	120	140	160
Descent Angle	3.03°	375	482	536	643	750
MAP at D1.6						



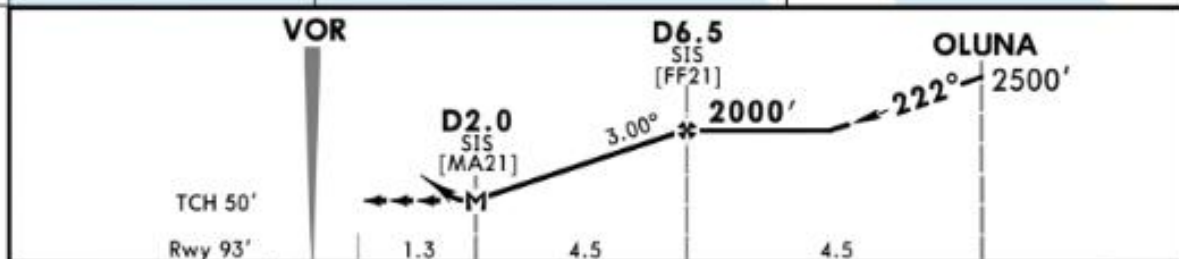
STRAIGHT-IN LANDING RWY 03 **CEILING REQUIRED** CIRCLE-TO-LAND RWY 21

MDA(H) 550' (438')		Max Kts	MDA(H)	CEIL-VIS
A	CEILING-VISIBILITY	100	700' (588')	600' - 2.8 km
B	500' - 1.6 km	135		
C	500' - 2.0 km	180	800' (688')	700' - 4.6 km
D	500' - 2.4 km	205		

CHANGES: Approach frequency added. © JEPPESEN, 2016, 2020. ALL RIGHTS RESERVED.

NAVIGRAPH CHARTS INTENDED FOR FLIGHT SIMULATION ONLY - NOT FOR NAVIGATIONAL USE

LAS AMERICAS Approach		SAN ISIDRO Tower			Ground
119.3		122.7			121.8
VOR SIS 112.4	Final Apch Crs 222°	Minimum Alt D6.5 2000' (1907')	MDA(H) 550' (457')	Apt Elev 112' Rwy 93'	
MISSED APCH: Climb on runway heading until 1000' then, climbing RIGHT turn to 2500'. Proceed to OLUNA or in accordance with ATC instructions.					
Alt Set: hPa		Rwy Elev: 0 hPa	Trans level: FL 180	Trans alt: 17000'	MSA SIS VOR



Gnd speed-Kts	70	90	100	120	140	160	PAPI-L	1000' on RWY hdg
Descent Angle 3.00°	372	478	531	637	743	849		
MAP at D2.0 SIS								

STRAIGHT-IN LANDING RWY 21		CEILING REQUIRED	CIRCLE-TO-LAND RWY 03	
MDA(H) 550' (457')		Max Kts	MDA(H)	CEIL-VIS
A	CEILING-VISIBILITY	100	700' (588')	600' - 2.8 km
B	500' - 1.6 km	135		
C	500' - 2.0 km	180	800' (688')	700' - 4.6 km
D	500' - 2.4 km	205		

CHANGES: Approach frequency added. © JEPPESEN, 2016, 2020. ALL RIGHTS RESERVED.