

ADDITIONAL RUNWAY INFORMATION

RWY		USABLE LENGTHS		TAKE-OFF	WIDTH
		Threshold	Glide Slope		
11	RL MALSR PAPI-L (angle 3.0°)	8497' 2590m		8497' 2590m	148' 45m
29	RL PAPI-L (angle 3.0°)				

TAKE-OFF

All Rwys

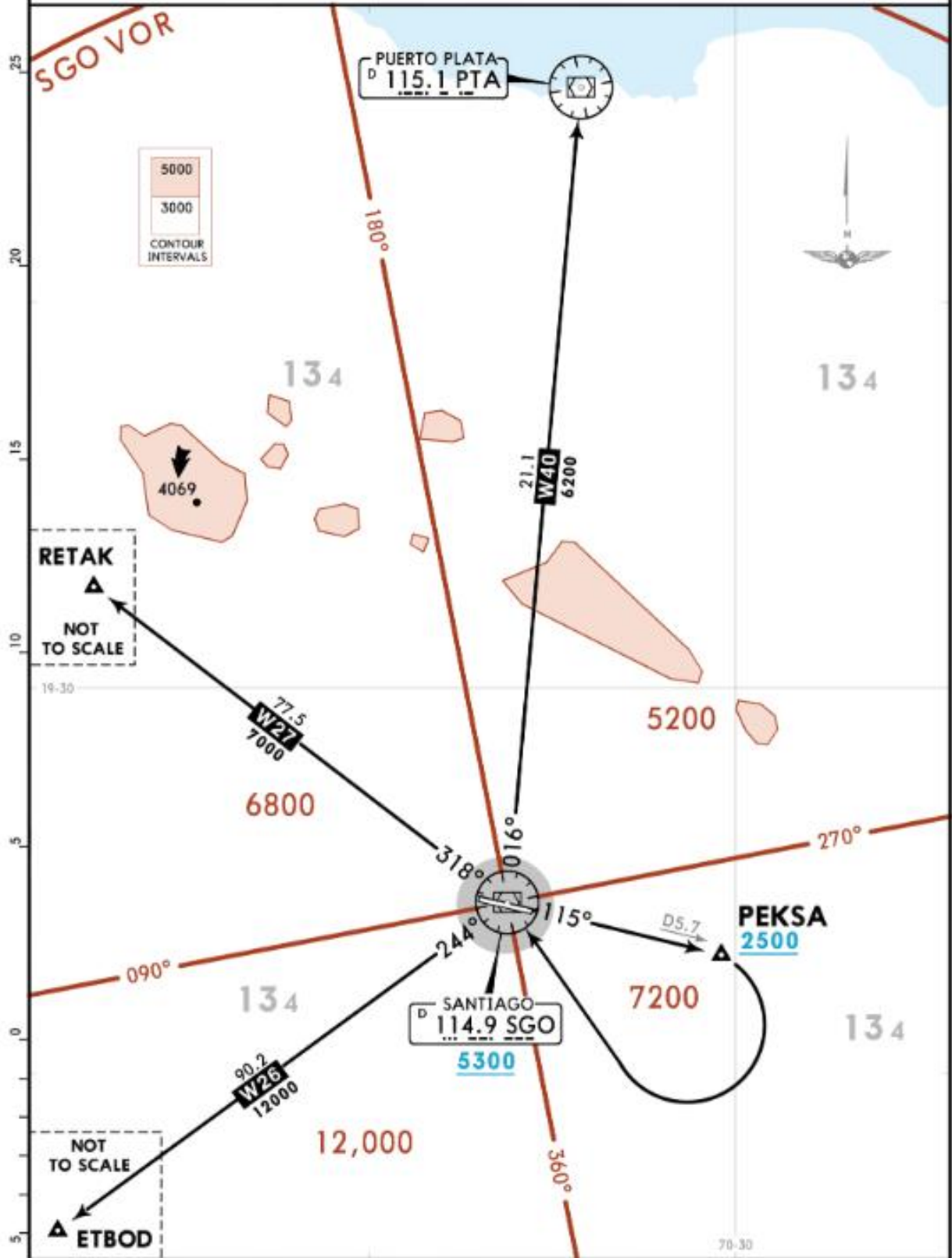
1 & 2
Eng

3 & 4
Eng

Available Landing Minimums

Apt Elev 565	Trans alt: 17000
-----------------	------------------

PEKSA 2 DEPARTURE
[PEKSA2]
(RWY 11)

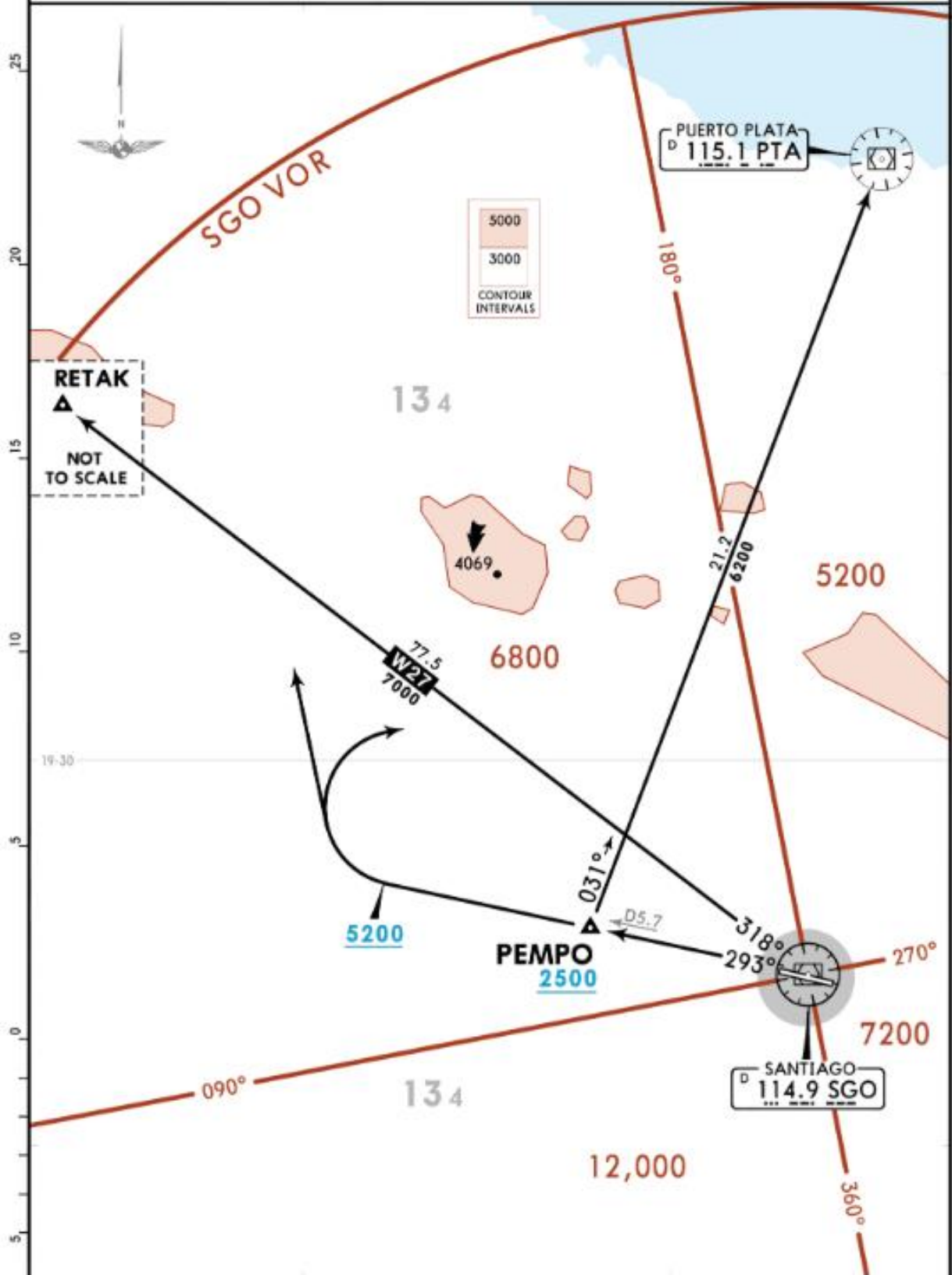


INITIAL CLIMB
After take-off climb on SGO R115. Cross PEKSA at or above 2500. Over PEKSA RIGHT climbing turn direct to SGO VOR at or above 5300 then direct to ETBOD, PTA VOR or RETAK.

CHANGES: New format. © JEPPESEN, 2019. ALL RIGHTS RESERVED.

Apt Elev 565	Trans alt: 17000
-----------------	------------------

PEMPO 1 DEPARTURE
[PEMPO1]
(RWY 29)



INITIAL CLIMB
Climb on SGO R293 until reaching 5200, then RIGHT climbing turn direct to PTA VOR or RETAK.

CHANGES: New format. © JEPPESEN, 2019. ALL RIGHTS RESERVED.

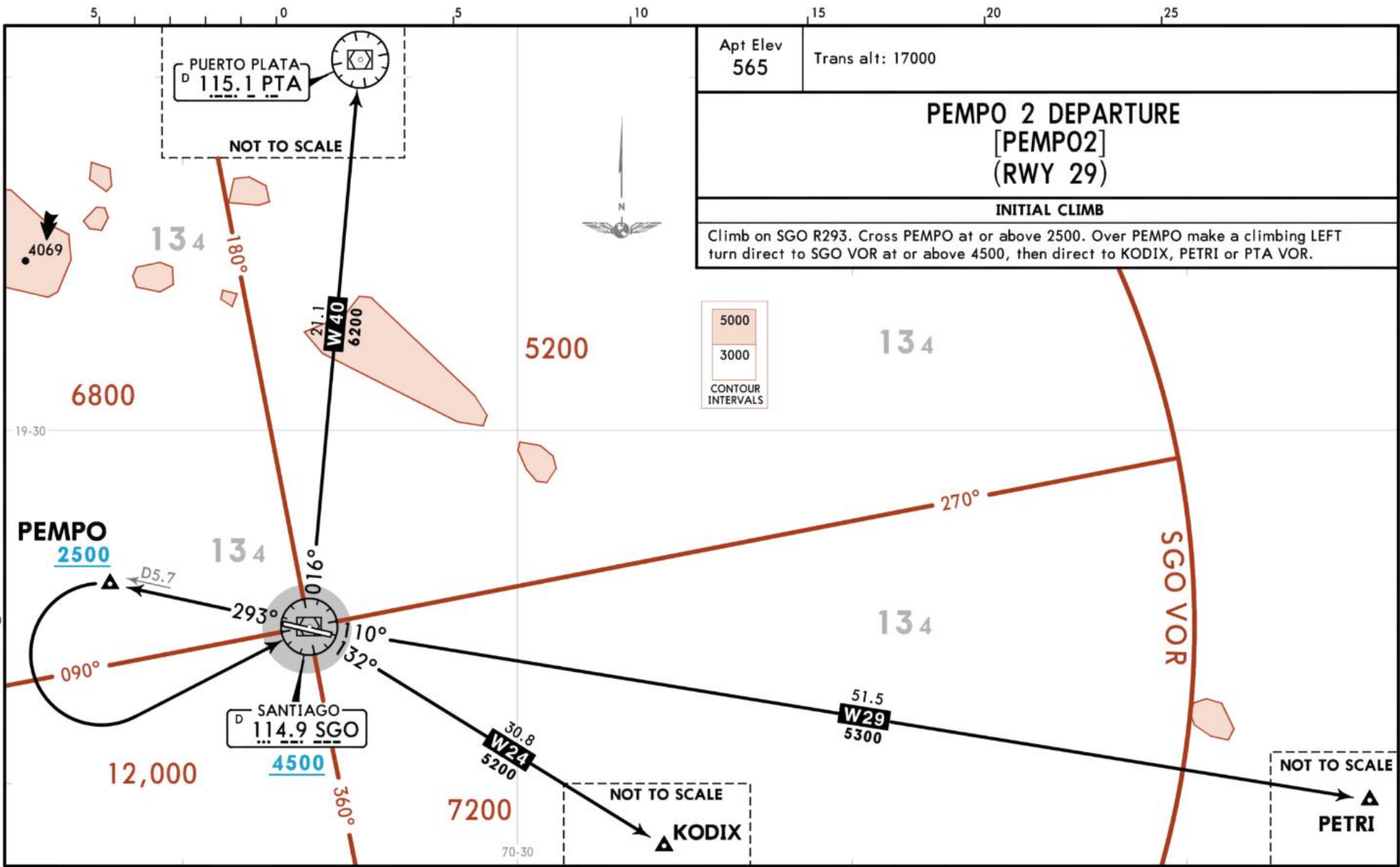
MDST/STI
CIBAO INTL

9 AUG 19
JEPPESEN
10-3C

SANTIAGO, DOM REP
SID

Apt Elev 565	Trans alt: 17000
PEMPO 2 DEPARTURE [PEMPO2] (RWY 29)	
INITIAL CLIMB	
Climb on SGO R293. Cross PEMPO at or above 2500. Over PEMPO make a climbing LEFT turn direct to SGO VOR at or above 4500, then direct to KODIX, PETRI or PTA VOR.	

5000
3000
CONTOUR INTERVALS



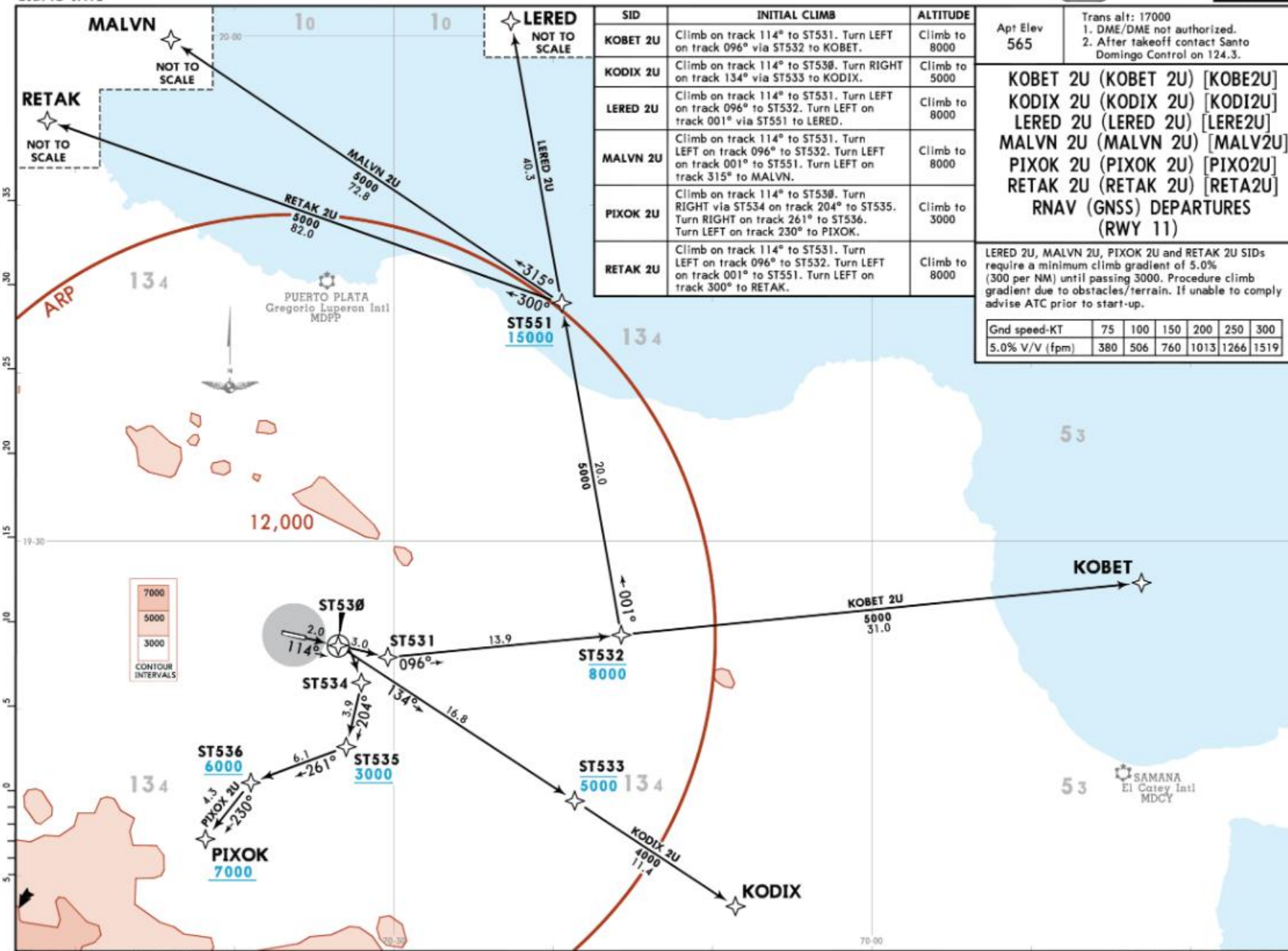
CHANGES: New format.
NAVIGRAPH CHARTS INTENDED FOR FLIGHT SIMULATION ONLY - NOT FOR NAVIGATIONAL USE
© JEPPESEN, 2019. ALL RIGHTS RESERVED.

MDST/STI
CIBAO INTL

JEPPESEN
1 NOV 19 (10-3D) Eff 7 Nov

SANTIAGO,
DOM REP
RNAV SID

NAVIGRAPH CHARTS INTENDED FOR FLIGHT SIMULATION ONLY - NOT FOR NAVIGATIONAL USE



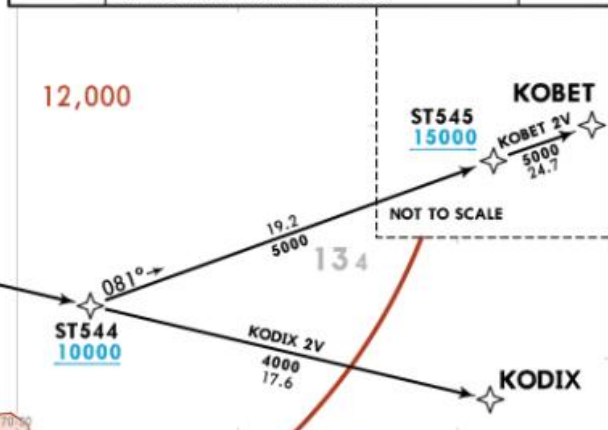
CHANGES: Procedures added, deleted, revised, renumbered.

© JEPPESEN, 2019. ALL RIGHTS RESERVED.

NAVIGRAPH CHARTS INTENDED FOR FLIGHT SIMULATION ONLY - NOT FOR NAVIGATIONAL USE



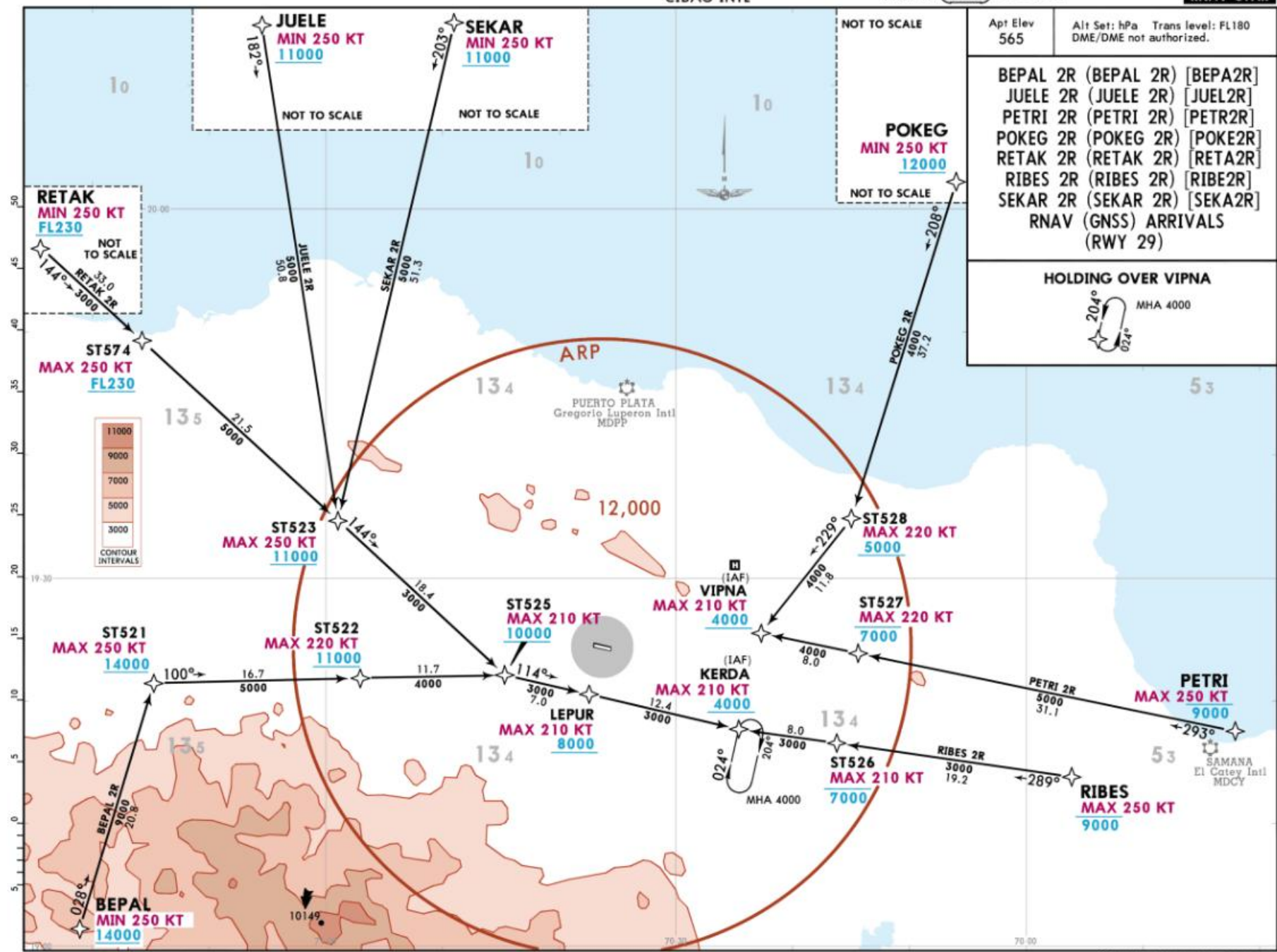
Apt Elev 565	Trans alt: 17000 1. DME/DME not authorized. 2. After takeoff contact Santo Domingo Control on 124.3.																					
KOBET 2V (KOBET 2V) [KOBET2V] KODIX 2V (KODIX 2V) [KODIX2V] LERED 2V (LERED 2V) [LERE2V] MALVN 2V (MALVN 2V) [MALV2V] PIXOK 2V (PIXOK 2V) [PIXO2V] RETAK 2V (RETAK 2V) [RETA2V] RNAV (GNSS) DEPARTURES (RWY 29)																						
These SIDs require minimum climb gradients: KOBET 2V, KODIX 2V, and PIXOK 2V: 5.0% (300 per NM) until passing 3000. LERED 2V: 7.0% (430 per NM) until passing 6000. Procedure climb gradient due to obstacle/terrain. If unable to comply advise ATC prior to start-up.																						
<table border="1"> <thead> <tr> <th>Gnd speed-KT</th> <th>75</th> <th>100</th> <th>150</th> <th>200</th> <th>250</th> <th>300</th> </tr> </thead> <tbody> <tr> <td>5.0% V/V (fpm)</td> <td>380</td> <td>506</td> <td>760</td> <td>1013</td> <td>1266</td> <td>1519</td> </tr> <tr> <td>7.0% V/V (fpm)</td> <td>532</td> <td>709</td> <td>1063</td> <td>1418</td> <td>1772</td> <td>2127</td> </tr> </tbody> </table>		Gnd speed-KT	75	100	150	200	250	300	5.0% V/V (fpm)	380	506	760	1013	1266	1519	7.0% V/V (fpm)	532	709	1063	1418	1772	2127
Gnd speed-KT	75	100	150	200	250	300																
5.0% V/V (fpm)	380	506	760	1013	1266	1519																
7.0% V/V (fpm)	532	709	1063	1418	1772	2127																
SID	INITIAL CLIMB	ALTITUDE																				
KOBET 2V	Climb on track 294° to ST540. Turn LEFT via ST541 on track 204° to ST542. Turn LEFT on track 168° to ST543. Turn LEFT on track 114° to ST544. Turn LEFT on track 081° via ST545 to KOBET.	Climb to 7000																				
KODIX 2V	Climb on track 294° to ST540. Turn LEFT via ST541 on track 204° to ST542. Turn LEFT on track 168° to ST543. Turn LEFT on track 114° via ST544 to KODIX.	Climb to 7000																				
LERED 2V	Climb on track 294° to ST540. Turn RIGHT on track 011° to ST549. Turn RIGHT on track 028° to LARED.	Climb to 4000																				
MALVN 2V	Climb on track 294° to ST540. Turn LEFT on track 283° to ST571. Turn RIGHT on track 325° to ST572. Turn RIGHT on track 011° via ST573 to MALVN.	Climb to 9000																				
PIXOK 2V	Climb on track 294° to ST540. Turn LEFT via ST541 on track 204° to ST542. Turn LEFT on track 168° to ST543. Turn RIGHT on track 207° to PIXOK.	Climb to 7000																				
RETAK 2V	Climb on track 294° to ST540. Turn LEFT on track 283° to ST571. Turn RIGHT on track 325° to ST572. Turn RIGHT on track 339° to RETAK.	Climb to 9000																				



CHANGES: Procedures added, deleted, revised, renumbered.

Apt Elev 565	Alt Set: hPa DME/DME not authorized.
BEPAL 2R (BEPAL 2R) [BEPA2R] JUELE 2R (JUELE 2R) [JUEL2R] PETRI 2R (PETRI 2R) [PETR2R] POKEG 2R (POKEG 2R) [POKE2R] RETAK 2R (RETAK 2R) [RETA2R] RIBES 2R (RIBES 2R) [RIBE2R] SEKAR 2R (SEKAR 2R) [SEKA2R] RNAV (GNSS) ARRIVALS (RWY 29)	
HOLDING OVER VIPNA 	

NAVIGRAPH CHARTS INTENDED FOR FLIGHT SIMULATION ONLY - NOT FOR NAVIGATIONAL USE



CHANGES: Procedures revised, renumbered.