

MTCH/CAP

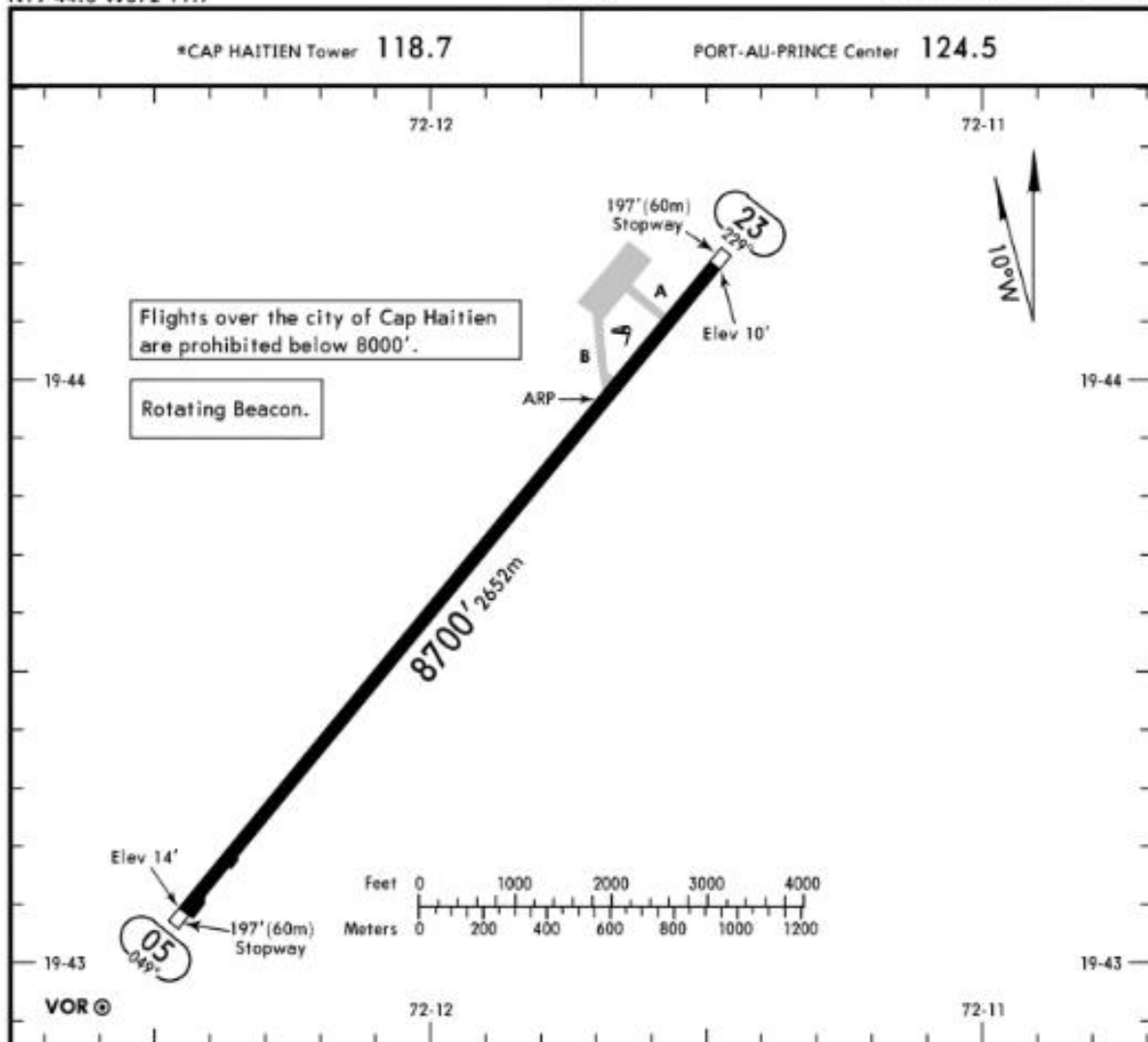
Apt Elev 14'
N19 44.0 W072 11.7

JEPPESEN

6 MAR 20 (10-9)

CAP HAITIEN, HAITI

CAP HAITIEN INTL



ADDITIONAL RUNWAY INFORMATION

RWY	USABLE LENGTHS	LANDING BEYOND		TAKE-OFF	WIDTH
		Threshold	Glide Slope		
05 23	HIRL TDZ PAPI-L (angle 3.0°)				148' 45m

TAKE-OFF

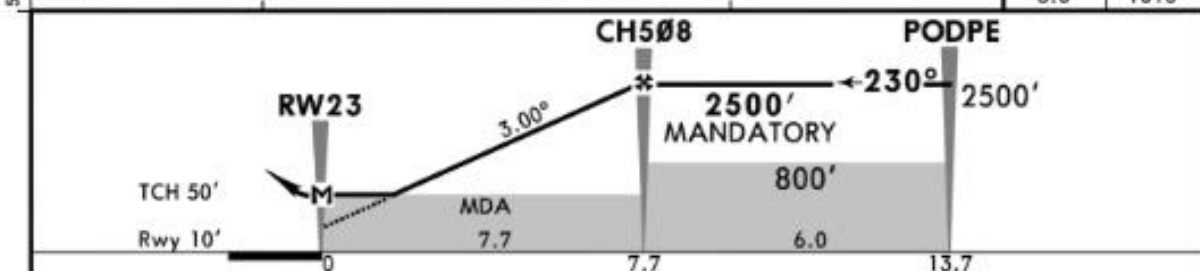
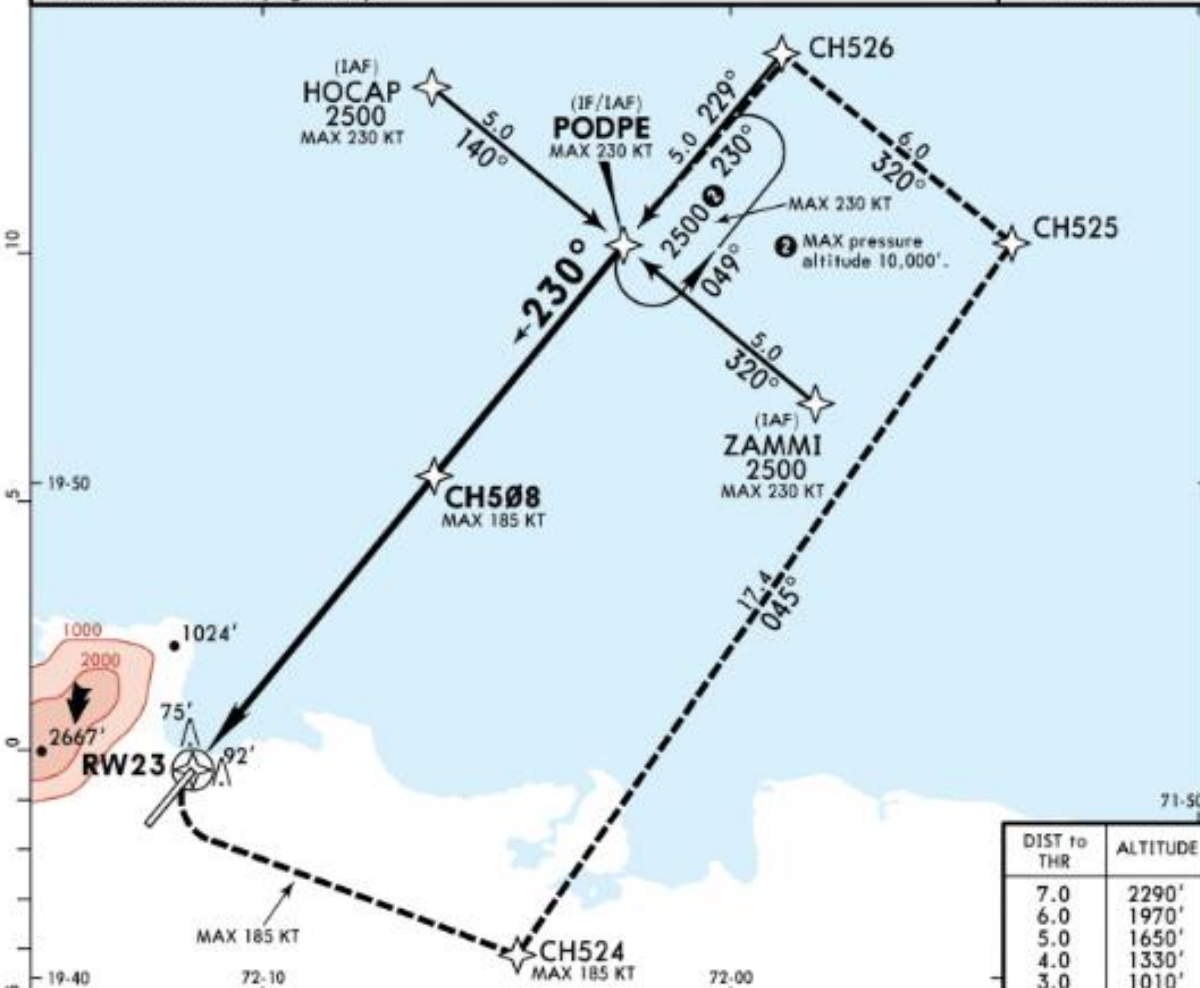
	AIR CARRIER (JAA)		AIR CARRIER (FAR 121)	
	LVP must be in Force All Rwys RCLM (Day only) or RL	All Rwys RCLM (Day only) or RL	All Rwys Adequate Vis Ref	
A	250m	400m	2 Eng	400m
B			3 & 4 Eng	
C				
D				

CHANGES: Taxiways revised.

© JEPPESEN, 2005, 2020. ALL RIGHTS RESERVED.

NAVIGRAPH CHARTS INTENDED FOR FLIGHT SIMULATION ONLY - NOT FOR NAVIGATIONAL USE

*CAP HAITIEN Tower 118.7				PORT-AU-PRINCE Center 124.5	
RNAV	Final Apch Crs 230°	Mandatory Alt CH508 2500' (2490')	LNAV MDA(H) (CONDITIONAL) 446' (436')	Apt Elev 14' Rwy 10'	
MISSED APCH: Climbing LEFT turn direct to CH524, to CH525, to CH526, to PODPE, up to 2500' and join holding pattern or follow ATC instructions. MAX 185 KT until CH524. MAX 230 KT until PODPE.					
Alt Set: hPa Apt Elev: 0 hPa Trans level: By ATC Trans alt: 17000'					
1. CAUTION: In final, visual segment surface (VSS) penetrated by obstacles. 2. For non-baro compensated aircraft: Minimum Temperature 10° C (50°F). Procedure usable: daylight only.					



Grnd speed-Kts	70	90	100	120	140	160			
Descent Angle	3.00°	372	478	531	637	849			
LNAV/VNAV: MAP at DA. LNAV: MAP at RW23									
FAF to RW 23	7.7	6:36	5:08	4:37	3:51	3:18	2:53	PAPI-L	2500'

STRAIGHT-IN LANDING RWY 23 Missed Apch Climb Gradient Mim 2.5%									
LNAV/VNAV					LNAV				
A: DA(H) 500' (490')		C: DA(H) 663' (653')			A: MDA(H) 450' (440')		C: MDA(H) 730' (720')		
B: DA(H) 512' (502')		D: DA(H) 705' (695')			B: MDA(H) 450' (440')		D: MDA(H) 760' (750')		
A	RVR 2300m				RVR 2000m				NIGHT NA
B	RVR 2400m				RVR 3300m				
C	RVR 3000m				RVR 3500m				
D	RVR 3200m								

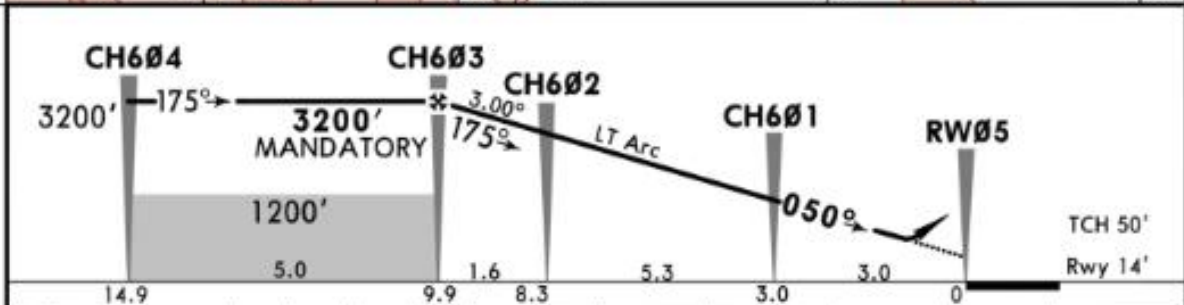
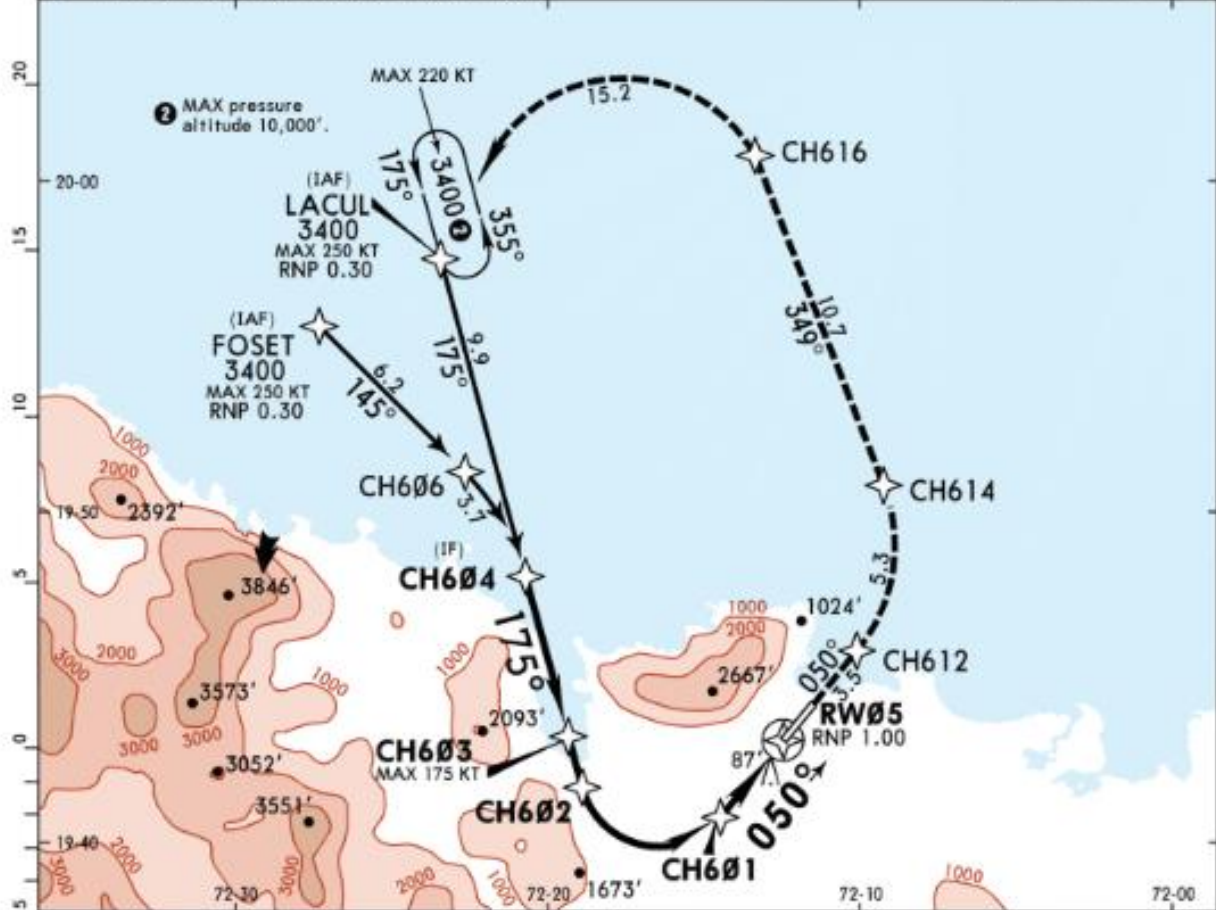
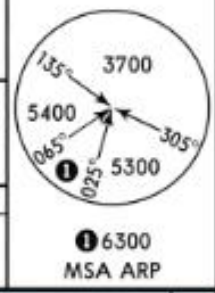
For minimums based on missed apch climb gradient more than 2.5% see 12-2A.
 CHANGES: Communications, MDA's. © JEPPESEN, 2015, 2019. ALL RIGHTS RESERVED.

MTCH/CAP
CAP HAITIEN INTL

JEPPESEN
11 JAN 19 (12-20)

CAP HAITIEN, HAITI
RNAV (RNP) Y Rwy 05

*CAP HAITIEN Tower 118.7		PORT-AU-PRINCE Center 124.5		
RNAV	Final Apch Crs 050°	Mandatory Alt CH603 3200' (3186')	RNP 0.30 DA(H) 309' (295')	Apt Elev 14' Rwy 14'
MISSED APCH: Climb to CH612, then turn LEFT with 5NM radius to CH614, then to CH616, then turn LEFT with 5 NM radius to LACUL up to 3400' and join holding pattern or follow ATC instructions. MAX 220 KT.				
Alt Set: hPa Apt Elev: 0 hPa Trans level: By ATC Trans alt: 17000'				
1. AUTHORIZATION REQUIRED. 2. CAUTION: In final, visual segment surface (VSS) penetrated by trees. 3. For non-baro compensated aircraft: Minimum Temperature: 10° C (50°F). Procedure usable: daylight only.				



Grnd speed-Kts	70	90	100	120	140	160	PAPI-L	CH612 ↑	LT ↙	CH614
Descent Angle 3.00°	372	478	531	637	743	849				

MAP at DA

STRAIGHT-IN LANDING RWY 05

RNP 0.30
DA(H) 309' (295')

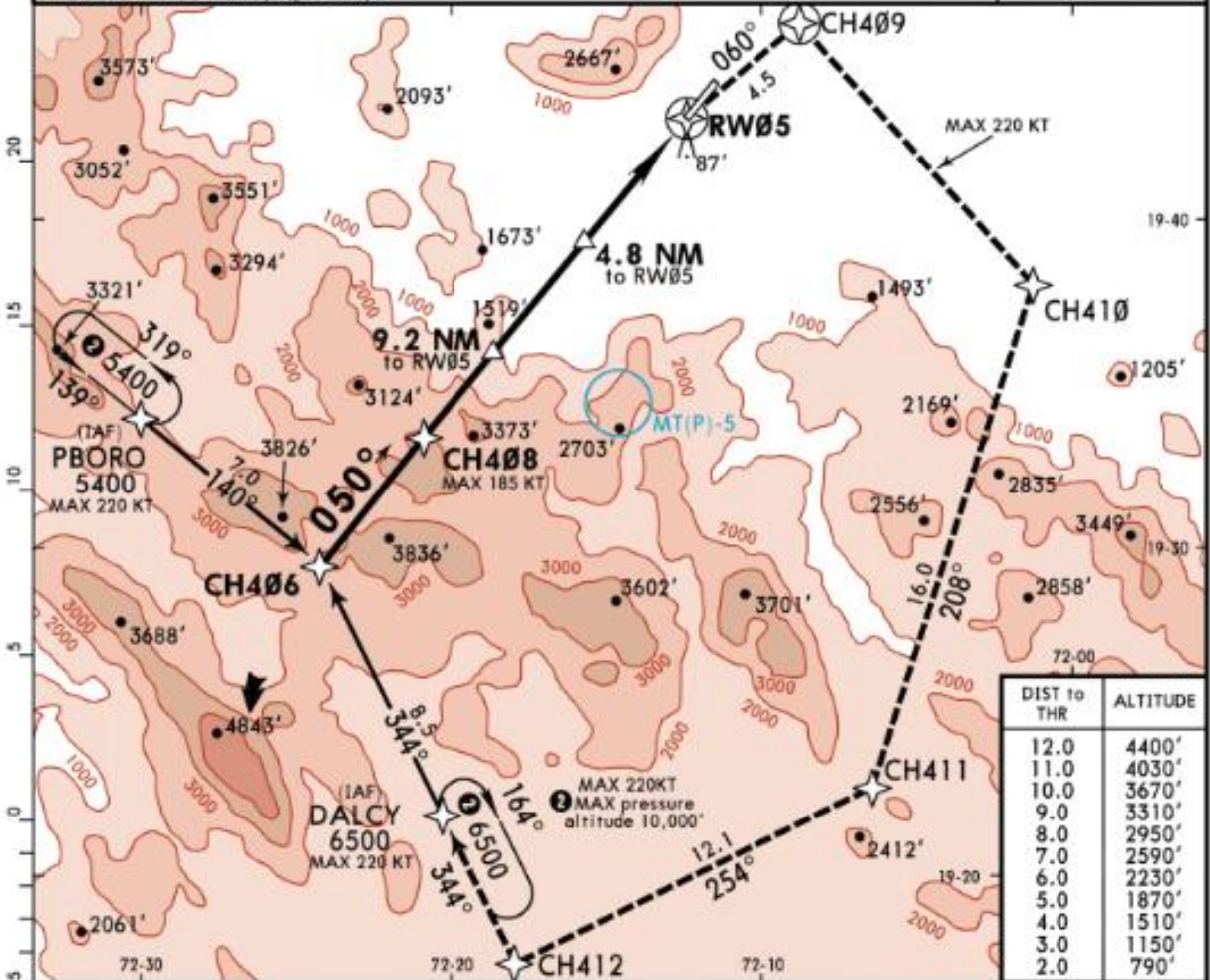
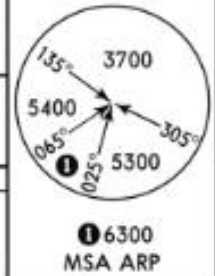
PANS OPS	A	RVR 1400m	NIGHT
	B		
	C		
	D		

MTCH/CAP
CAP HAITIEN INTL

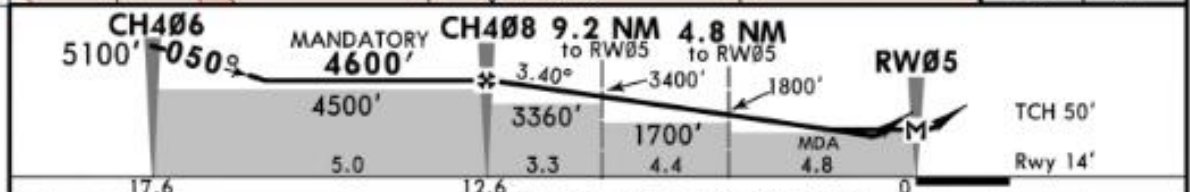
JEPPESEN
11 JAN 19 (12-1)

CAP HAITIEN, HAITI
RNAV (GNSS) Z Rwy 05

*CAP HAITIEN Tower 118.7		PORT-AU-PRINCE Center 124.5		
RNAV	Final Apch Crs 050°	Mandatory Alt CH408 4600' (4586')	LNAV/VNAV DA(H) (CONDITIONAL) 264' (250')	Apt Elev 14' Rwy 14'
MISSED APCH: Climbing to CH409 on course 060°, turn RIGHT direct to CH410, to CH411, to CH412, to DALCY, at or above 6500' and join holding pattern or follow ATC instructions. MAX 220 KT.				
Alt Set: hPa Apt Elev: 0 hPa Trans level: By ATC Trans alt: 17000'				
1. CAUTION: In final, visual segment surface (VSS) penetrated by trees. 2. For non-baro compensated aircraft: Minimum Temperature: 10° C (50°F). Temperature for effective 3.5° VPA: 23° C (73°F). Temperature for effective 3.7° VPA: 39° C (102°F). Procedure usable: daylight only.				



DIST to THR	ALTITUDE
12.0	4400'
11.0	4030'
10.0	3670'
9.0	3310'
8.0	2950'
7.0	2590'
6.0	2230'
5.0	1870'
4.0	1510'
3.0	1150'
2.0	790'



Gnd speed-Kts	70	90	100	120	140	160	PAP1-L	↑	060°	CH409	
Glide Path Angle	3.40°	421	541	602	722	842					963
LNAV/VNAV: MAP at DA. LNAV: MAP at RW05	12.6	10:48	8:24	7:34	6:18	5:24					4:43

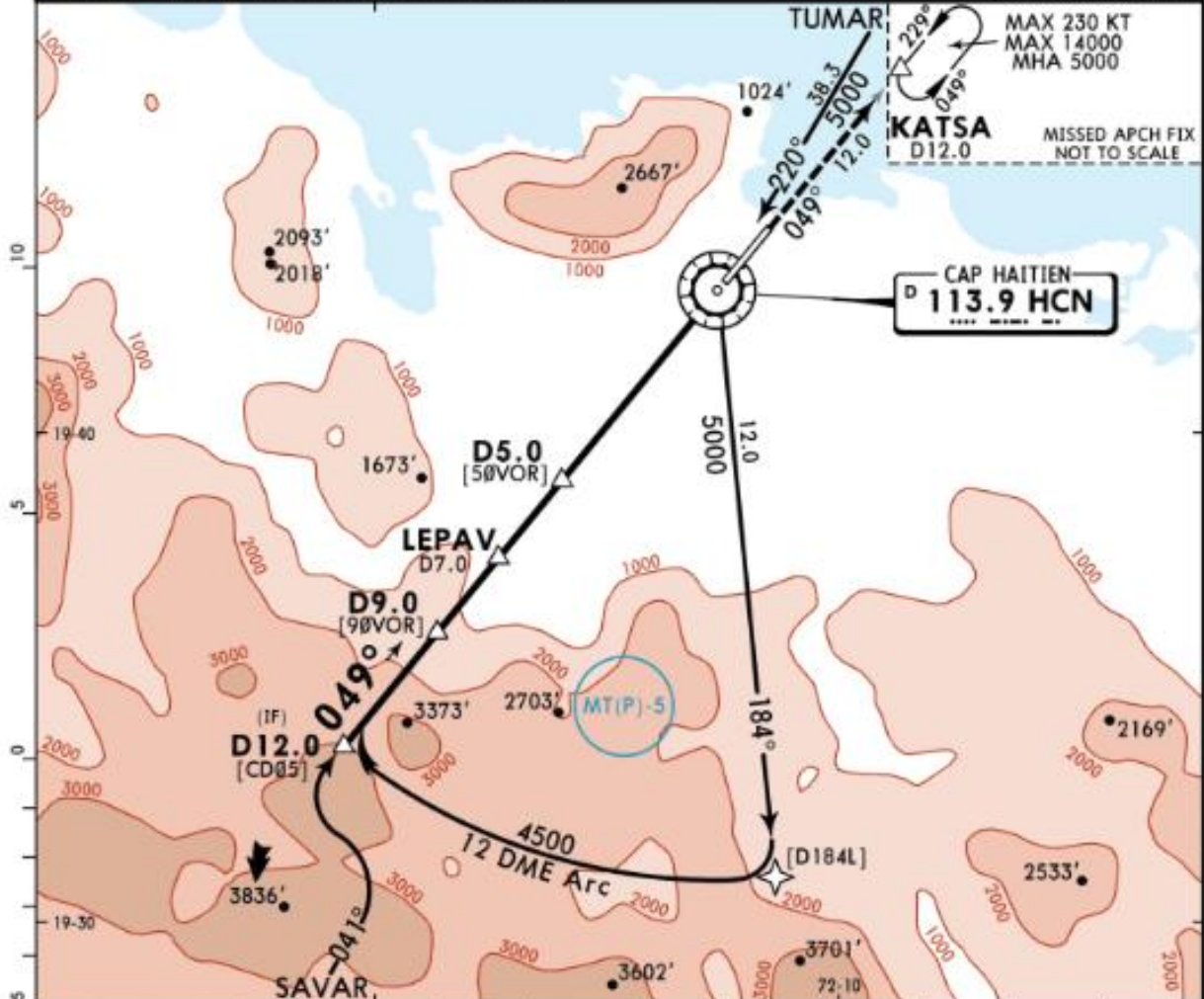
STRAIGHT-IN LANDING RWY 05 Missed Apch Climb Gradient Mim 3%											
LNAV/VNAV DA(H) 264' (250')					LNAV MDA(H) 420' (406')					NIGHT	
A B C D RVR 1300m					RVR 1900m					NA	
LNAV/VNAV Missed Apch Climb Gradient Mim 2.5%											
A: DA(H) 522' (508')					C: DA(H) 556' (542')					A: MDA(H) 600' (586')	C: MDA(H) 640' (626')
B: DA(H) 534' (520')					D: DA(H) 585' (571')					B: MDA(H) 620' (606')	D: MDA(H) 660' (646')
A	RVR 2400m					RVR 2600m					NA
B	RVR 2500m					RVR 2800m					
C	RVR 2500m					RVR 2900m					
D	RVR 2600m					RVR 3000m					

MTCH/CAP
CAP HAITIEN INTL

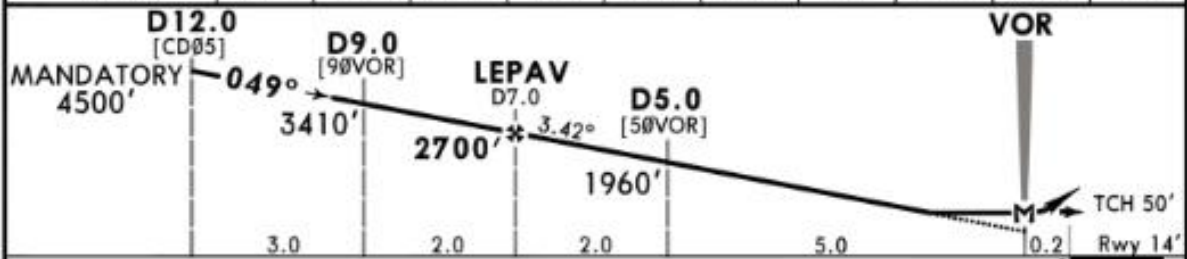
JEPPESEN
28 DEC 18 (13-1) Eff 3 Jan

CAP HAITIEN, HAITI
VOR DME Rwy 05

PORT-AU PRINCE Center 124.5			*CAP HAITIEN Tower 118.7			
VOR HCN 113.9	Final Apch Crs 049°	Minimum Alt LEPAV 2700' (2686')	MDA(H) 500' (486')	Apt Elev 14' Rwy 14'		
MISSED APCH: Climb to 5000' on HCN VOR R-049 outbound to KATSA and hold as depicted, or as directed by ATC.						
Alt Set: hPa		Rwy Elev: 1 hPa		Trans level: By ATC		
Visual segment surface (VSS) penetrated by trees.						



HCN DME	11.0	10.0	9.0	8.0	7.0	6.0	5.0	4.0	3.0	2.0
ALTITUDE	4140'	3780'	3410'	3050'	2700'	2320'	1960'	1600'	1230'	870'



Gnd speed-Kts	70	90	100	120	140	160	PAPI-L	5000'	HCN on 113.9 KATSA R-049
Descent Angle	3.42°	424	545	605	726	968			
MAP at VOR									

STRAIGHT-IN LANDING RWY 05 MDA(H) 500' (486')			CIRCLE-TO-LAND Not Authorized West of Rwy centerline MDA(H)
A	1600m	100	
B		135	
C	2000m	180	
D	2400m	205	810' (796') - 4000m

PANS OPS

CHANGES: New procedure.

© JEPPESEN, 2018. ALL RIGHTS RESERVED.

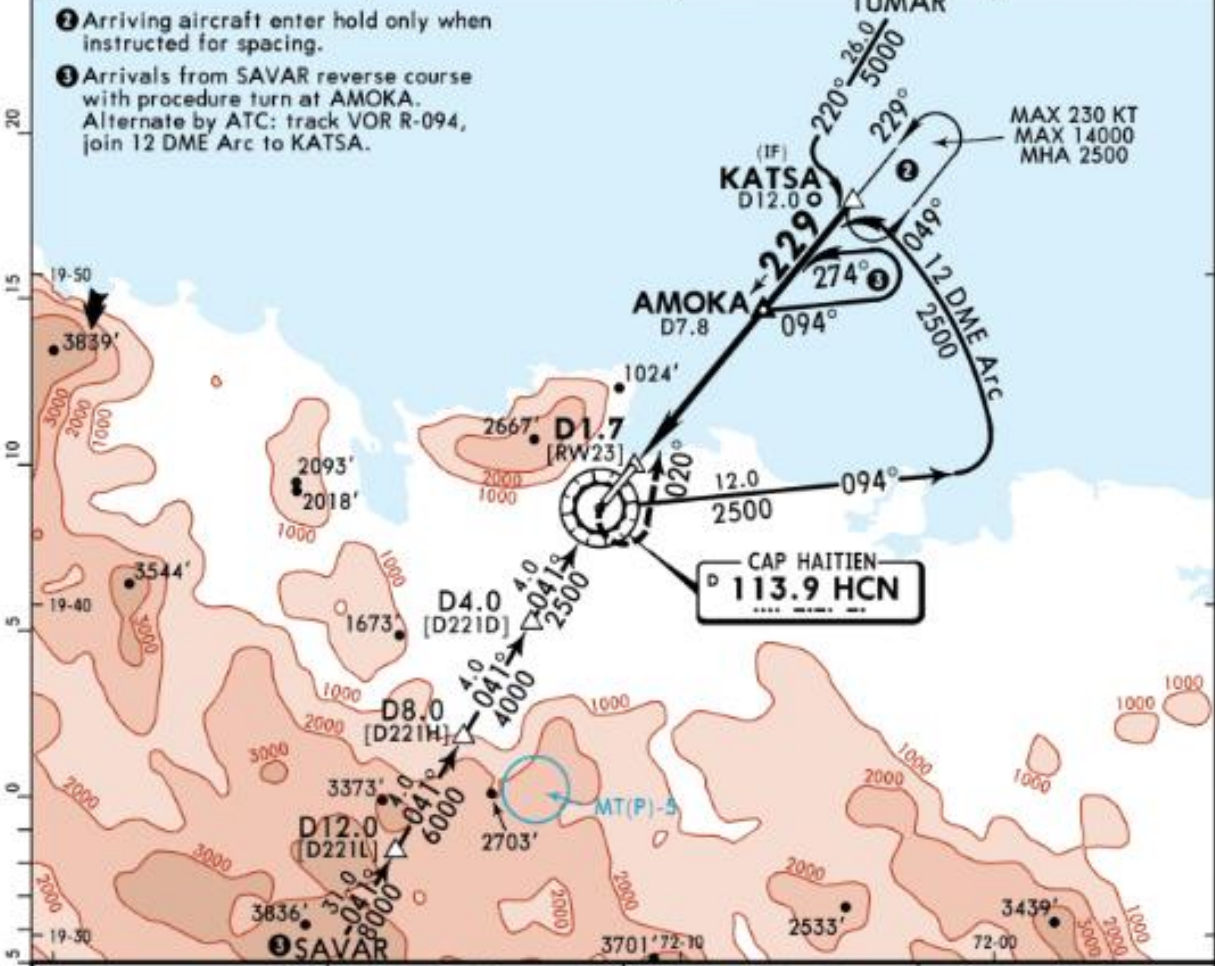
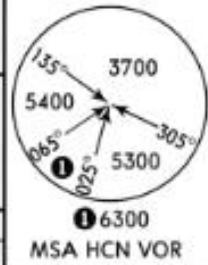
NAVIGRAPH CHARTS INTENDED FOR FLIGHT SIMULATION ONLY - NOT FOR NAVIGATIONAL USE

MTCH/CAP
CAP HAITIEN INTL

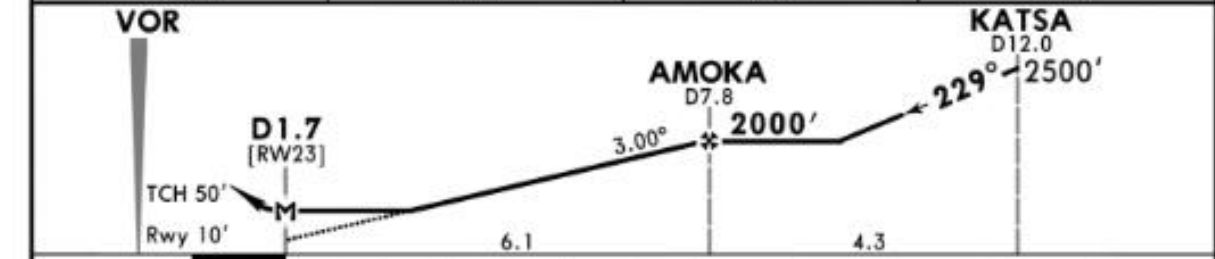
JEPPESEN
28 DEC 18 13-2 Eff 3 Jan

CAP HAITIEN, HAITI
VOR DME Rwy 23

PORT-AU PRINCE Center 124.5				*CAP HAITIEN Tower 118.7	
VOR HCN 113.9	Final Apch Crs 229°	Minimum Alt AMOKA 2000' (1990')	MDA(H) 540' (530')	Apt Elev 14'	Rwy 10'
MISSED APCH: Climb to 2500' in LEFT turn on course 020°, join HCN VOR R-049 outbound to KATSA and hold as depicted. With ATC approval, in lieu of holding, reverse course in procedure turn at AMOKA for additional approach. ALTERNATE MISSED APCH BY ATC: Climb to 2500' in LEFT turn on course 049° to intercept HCN VOR R-094 outbound, join 12 DME Arc and hold at KATSA as depicted.					
Alt Set: hPa		Rwy Elev: 0 hPa		Trans level: By ATC	
Visual segment surface (VSS) penetrated by obstacles.				Trans alt: 17000'	



HCN DME	4.0	5.0	6.0
ALTITUDE	810'	1130'	1450'



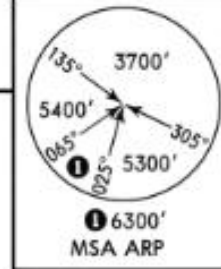
Gnd speed-Kts	70	90	100	120	140	160	PAPI-L	2500'	on 020°	HCN 113.9	KATSA R-049	
Descent Angle	3.00°	372	478	531	637	743						849
MAP at D1.7								LT				

STRAIGHT-IN LANDING RWY 23				CIRCLE-TO-LAND			
MDA(H) 540' (530')				Not Authorized West of Rwy centerline			
PANS OPS	A	1600m		Max Kts	580' (566') - 1600m		
	B			100			
	C	2400m		135	750' (736') - 3200m		
	D	2800m		180	750' (736') - 3200m		
				205	810' (796') - 4000m		

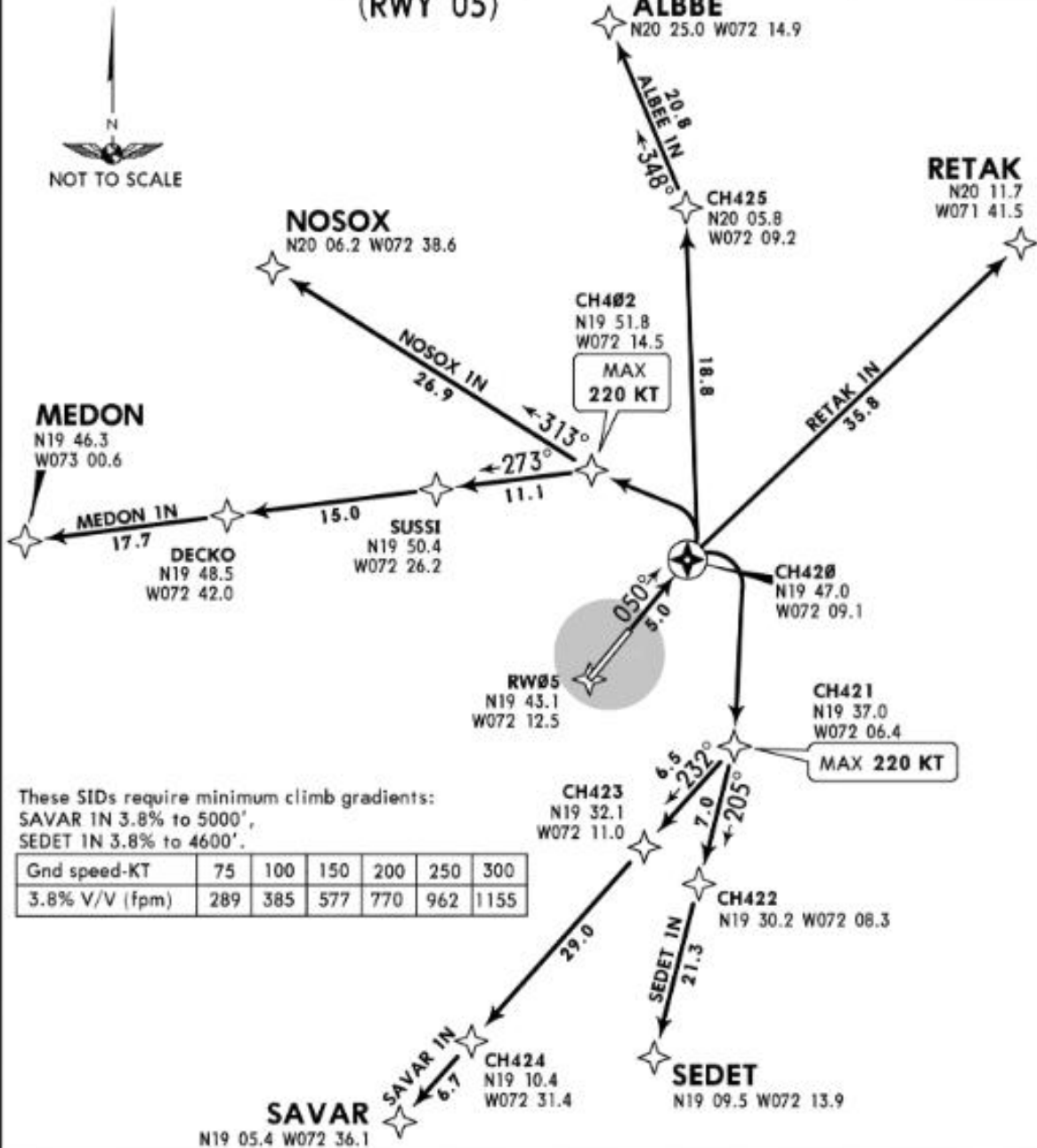
CHANGES: New procedure. © JEPPESEN, 2018. ALL RIGHTS RESERVED.

Apt Elev
14'

Trans level: BY ATC Trans alt: 17000'
1. RNP-1 required.
2. Procedure usable: daylight only.



ALBEE IN [ALBE1N], MEDON IN [MEDO1N]
NOSOX IN [NOSO1N], RETAK IN [RETA1N]
SAVAR IN [SAVA1N], SEDET IN [SEDE1N]
RNAV (GNSS)
(RWY 05)



These SIDs require minimum climb gradients:
SAVAR IN 3.8% to 5000',
SEDET IN 3.8% to 4600'.

Gnd speed-KT	75	100	150	200	250	300
3.8% V/V (fpm)	289	385	577	770	962	1155

INITIAL CLIMB

Climb to CH420 on 050° course.

SID	ROUTING
ALBEE IN	At CH420, turn LEFT direct to CH425, to ALBEE.
MEDON IN	At CH420, turn LEFT direct to CH402, to SUSSI, to DECKO, to MEDON. Do not exceed 220 KT until CH402.
NOSOX IN	At CH420, turn LEFT direct to CH402, to NOSOX. Do not exceed 220 KT until CH402.
RETAK IN	At CH420, turn RIGHT direct to RETAK.
SAVAR IN	At CH420, turn RIGHT direct to CH421, to CH423, to CH424, to SAVAR. Do not exceed 220 KT until CH421.
SEDET IN	At CH420, turn RIGHT direct to CH421, to CH422, to SEDET. Do not exceed 220 KT until CH421.

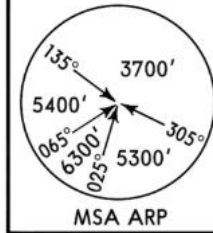
CHANGES: ALBEE waypoint renamed ALBEE.

© JEPPESEN, 2015, 2016. ALL RIGHTS RESERVED.

NAVIGRAPH CHARTS INTENDED FOR FLIGHT SIMULATION ONLY - NOT FOR NAVIGATIONAL USE

Apt Elev
14'

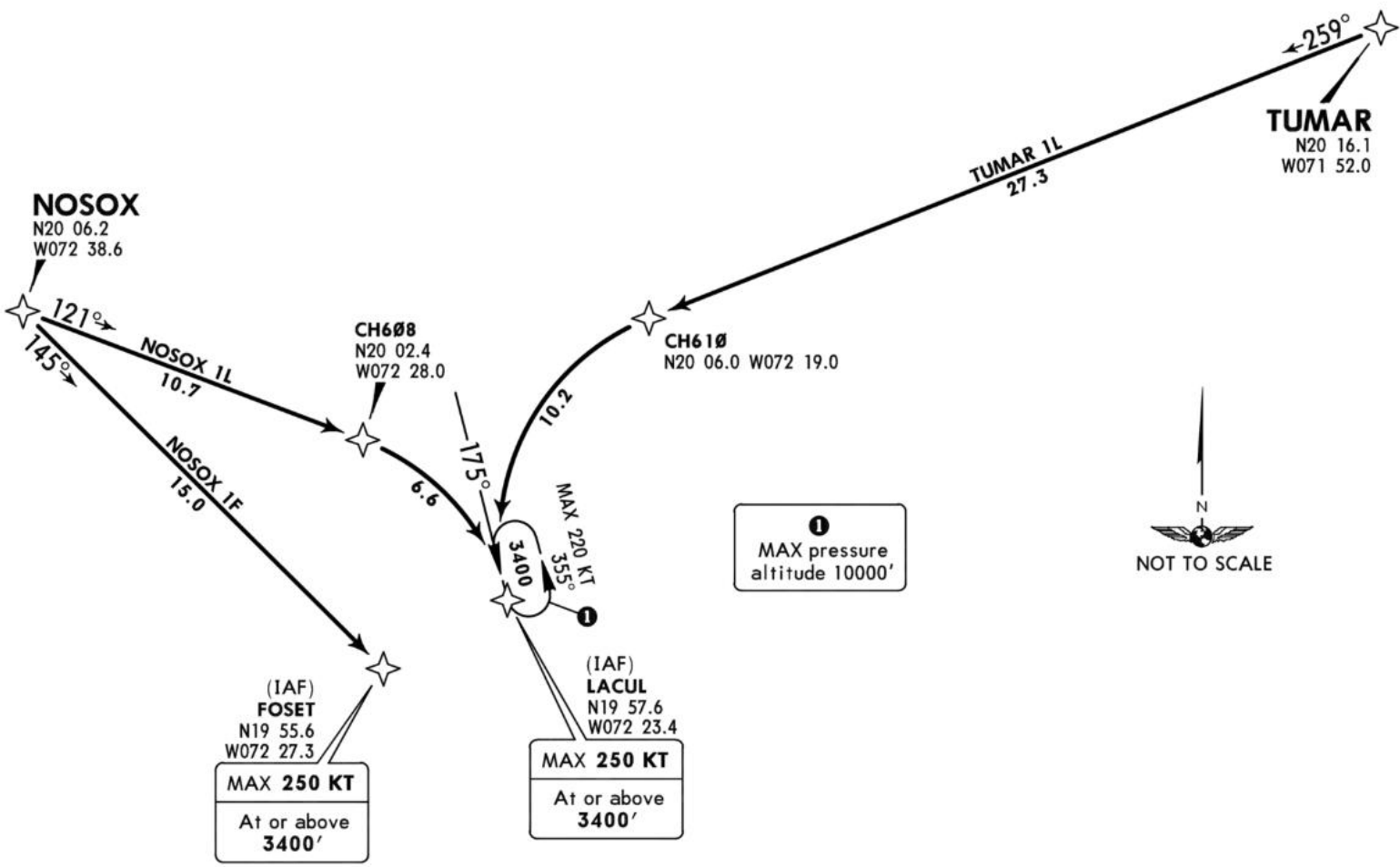
Alt Set: hPa Trans level: By ATC Trans alt: 17000'
1. RNP-1 required.
2. RF capability required.



NOSOX 1F [NOSO1F], NOSOX 1L [NOSO1L],
TUMAR 1L [TUMAIL]
RNAV (GNSS) ARRIVALS
(RWY 05)

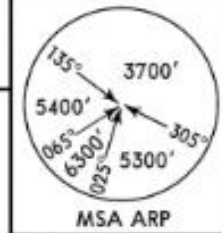


Direct distance to
Cap Haitien Intl from:
FOSET 19 NM
LACUL 18 NM

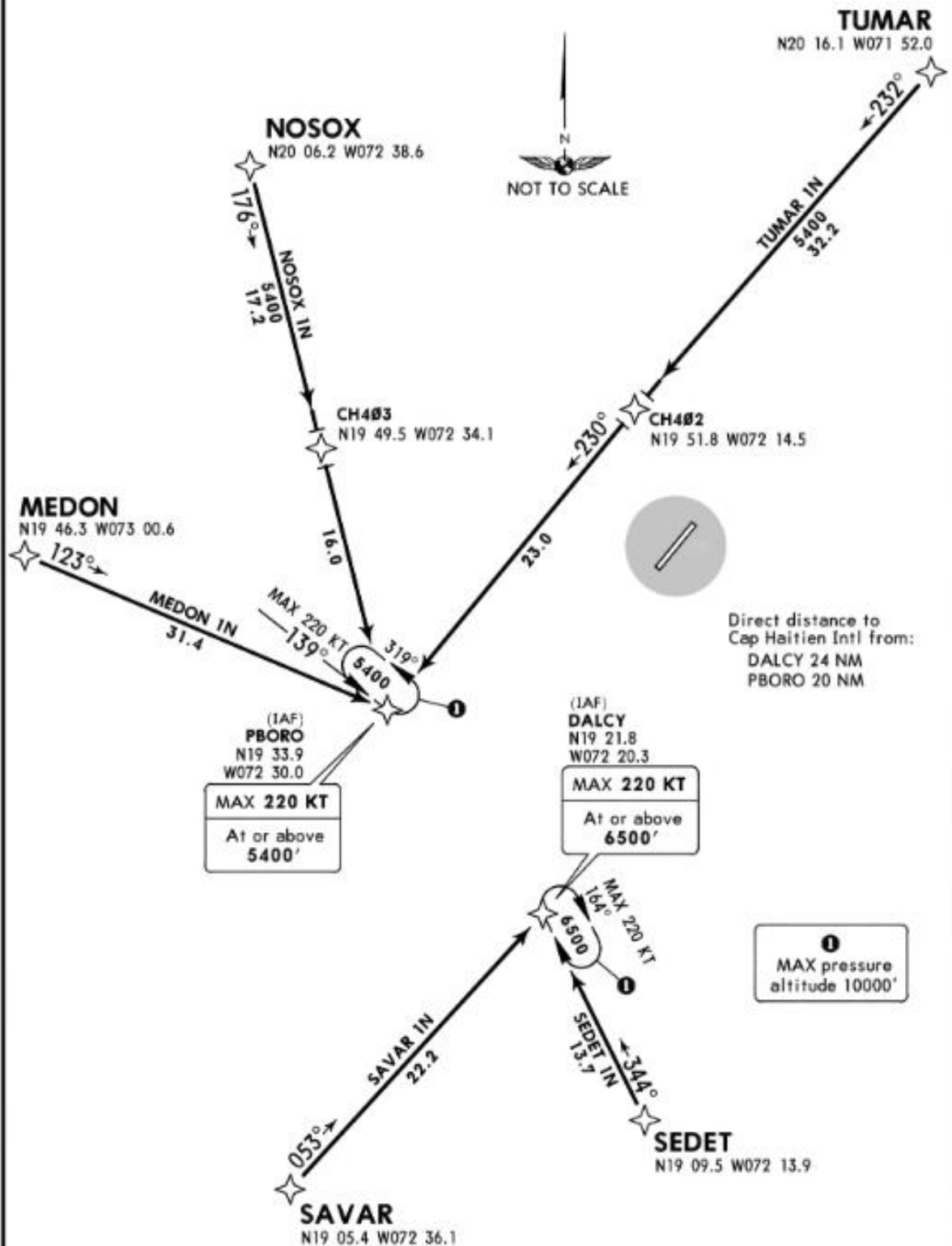


Apt Elev
14'

Alt Set: hPa Trans level: By ATC Trans alt: 17000'
RNP-1 required.

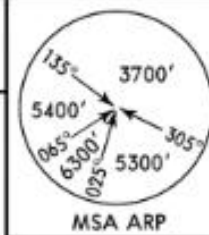


MEDON IN [MEDO IN], NOSOX IN [NOSO IN],
SAVAR IN [SAVA IN], SEDET IN [SEDE IN],
TUMAR IN [TUMA IN]
RNAV (GNSS) ARRIVALS
(RWY 05)



Apt Elev
14'

Alt Set: hPa Trans level: By ATC Trans alt: 17000'
RNP-1 required.



MEDON 1S [MEDO1S], NOSOX 1S [NOSO1S],
RETAK 1S [RETA1S], SAVAR 1S [SAVA1S],
SEDET 1S [SEDE1S], TUMAR 1S [TUMA1S]
RNAV (GNSS) ARRIVALS
(RWY 23)

